



# Year 9 GCSE Options Booklet 2024

# Year 9 GCSE Options

## Welcome to the Year 9 GCSE Options Booklet!

As you embark on this exciting phase of your education, you have the opportunity to make important choices that will shape your future.

Let's explore what this booklet aims to achieve and how it can guide you in making informed choices:

### 1. The options process:

- All students will study GCSE English Language, GCSE English Literature, GCSE Mathematics, GCSE Combined Science (2 GCSE qualifications), GCSE History or GCSE Geography, Full course GCSE PER or Short Course GCSE PER and core PE.
- While part of the curriculum is fixed, the rest of your timetable is customisable. You get to choose from a variety of GCSE or vocational/BTEC Technical Award qualifications.
- This booklet will help you navigate through your available options.

### 2. Seeking advice:

- Decision-making is easier when you seek advice from various sources:
  - **Subject information:** This booklet contains every subject description, how it is examined and how to be successful in the subject. Read the pages carefully then pick a subject that best fits you.
  - **Subject Teachers:** Speak to them, they know you and your strengths and interests.
  - **Subject Leaders:** These are experts in their subjects and can guide you toward suitable choices.
  - **Heads of House and Tutors:** They understand you and your overall progress.
  - **Parents and Older Students:** Learn from those who have already been through the process.

### 3. Things to consider:

- Pick subjects you are interested in, this will mean that you will enjoy it and will be prepared to work hard at it.
- Read the subject information pages carefully and consider your strengths and weaknesses when picking a course.
- Consider how the subject is assessed. Does it have a lot of writing or maths in it? Is it a practical subject? Does it require meeting regular deadlines to produce coursework-based assignments? Do you perform better in coursework-based assignments, final exams or mixture of both?

### 4. Next steps:

- Explore this booklet, it contains all the information for the different subjects.
- Pick either GCSE History or GCSE Geography.
- Pick your other subject choices and reserve options by **Friday 3rd May**.

We understand that selecting your GCSE subjects is a big decision. Our goal is to accommodate your first-choice subjects whenever possible. However, due to various factors, it may not always be feasible to allocate everyone their top preferences. Some students may also be guided onto a pathway.

We have a system in place to consider reserve subjects. These are alternative options that align with your interests and abilities. If your first-choice subjects cannot be accommodated, we will explore these reserve options with you to ensure a well-rounded and fulfilling curriculum.

All the information you need about the subjects is within this booklet, read them all, seek advice and make choices that link with your aspirations.

Your exciting GCSE journey awaits!

# GCSE Subjects

---

- Most GCSE based subjects are assessed by an exam sat at the end of the year.
- Some GCSE subjects have a practical element so are assessed differently these include GCSE Art, GCSE Art Textiles, GCSE Drama.
- GCSE Film studies and GCSE media studies both have a smaller coursework element that forms 30% of the overall grade.
- These subjects are graded from 1 – 9. With a grade 4 being classed as a 'pass' (a grade 9 being the highest achievable grade)

# Vocational BTEC and WJEC Technical Awards

---

- These subjects have a higher emphasis on classroom-based assignment learning and take a more hands on approach that align with specific sectors or industries.
- They provide direct links to careers by focusing on practical skills and knowledge relevant to real-world job roles.
- These subjects are mainly coursework-based assignments that are completed as a controlled assessment in class which forms the majority of the overall grade.
- There is also one externally marked exam that is completed at the end of year 11.
- In these subjects you can be awarded a Pass, Merit, Distinction or Distinction\*.

When selecting a preferred subject choice, please only select each subject once.

Please be aware that due to large similarity in the subject content, the following combination of subjects cannot be studied together:

- GCSE Art, GCSE Art Textiles or BTEC Tech Award in Art & Design.
- GCSE Drama or BTEC Tech award in Performing Arts.

# English Language



## What will you study?

The Eduqas English Language qualification will enable you to communicate successfully to a range of different audiences and in a variety of contexts.

You will learn to be perceptive readers, creative and fluent writers and confident verbal communicators.

**Reading fiction:** Developing our close reading skills looking at a range of texts. You will practise skills of selecting information, analysing writers' choices and evaluation of texts.

**Narrative writing:** Learning how to use the power of language to plan, craft, write and edit entertaining stories.

**Reading non-fiction:** Developing our close reading skills across both older and modern texts. You will practise skills of selecting information, analysing writers' choices, synthesising, comparing and evaluating.

**Transactional writing:** Learning how to plan and write persuasive texts for different audiences and purposes. Texts include speeches, reviews, formal letters, informal letters and reports.

**Spoken language:** Planning and presenting a speech to your class on a topic of your choice. This will teach you to become a confident communicator who can adapt language for the needs of your audience.



## How is this course assessed?

The course is assessed with two written exams, as well as a Spoken Language presentation to your class.

- **Exam Format:** **Component 1** is worth 40% of your grade. **Component 2** is worth 60% of your grade. Your Spoken Language mark is a pass, merit or distinction.
- **Exam Structure:** **Component 1** is 1 hour and 45 minutes. **Component 2** is 2 hours.

## What do you need to be successful on this course?

To succeed in Eduqas GCSE English Language, you'll need perseverance, listening skills, and a desire to develop your communication skills for a successful future. Here are some key qualities:

**Strong work ethic:** You need to listen carefully and work hard every lesson.

**Good literacy skills:** You need to be able to proofread your work for errors and make corrections.

**Creativity:** You need to be imaginative and think carefully about how you can inspire your audiences.

**Positivity:** You need to be resilient when faced with challenges and feedback. You should always strive to improve knowing that it will help you in the future.

*For more information, please speak with Ms Ridgeon.*

# English Literature



## What will you study?

The Eduqas English Literature qualification will inspire you to read and celebrate a broad range of texts from across the literary world. You will learn how to decode language, analyse writers' intentions and practise skills of analytical writing and memorising quotations.

**Macbeth:** Studying one of Shakespeare's most entertaining plays full of violence, secrecy and supernatural trickery. You will develop your close reading skills and appreciation of stagecraft.

**Poetry anthology:** You will encounter poetic voices from across the ages and learn to draw comparisons between different poets' ideas.

**An Inspector Calls:** You will revise the play that you have already started to study in year 9 and continue to build your understanding of Priestley's fascinating characters and message.

**A Christmas Carol:** You will enter the world of Dickens' famous text and learn how his book is a product of the society in which he lived.

**Unseen poetry:** You will develop the confidence to read, analyse and write about modern poetry that you haven't studied already.

## How is this course assessed?

The course is assessed with two written exams.

- **Exam Format:** You will sit **Component 1** (*Macbeth and Poetry*) and **Component 2** (*An Inspector Calls, A Christmas Carol and Unseen*)
- **Exam Structure:** **Component 1** is 2 hours. **Component 2** is 2 hours and 30 minutes.



## What do you need to be successful on this course?

To succeed in Eduqas GCSE English Literature, you'll need to become a resilient and inquisitive reader. You should be ready to immerse yourself in the texts that you study and be prepared to take on the challenge of learning quotations, concepts and writers' intentions.

**Strong work ethic:** You need to listen carefully and work hard every lesson.

**Good literacy skills:** You need to be able to proofread your work for errors and make corrections.

**Reading skills:** You need to be a resilient reader who is prepared to take careful notes, ask questions and listen to your teacher's advice.

**Positivity:** You need to be resilient when faced with challenges and feedback. You should always strive to improve knowing that it will help you in the future.

*For more information, please speak with Ms Ridgeon.*

# Mathematics



## What will you study?

The Edexcel GCSE Maths course covers a wide range of mathematical concepts, equipping you with a strong foundation for your future. Here are some of the key areas you'll explore:

**Number:** Working with integers, fractions, decimals, percentages, and their operations. You'll also delve into concepts like prime numbers, factors, and multiples.

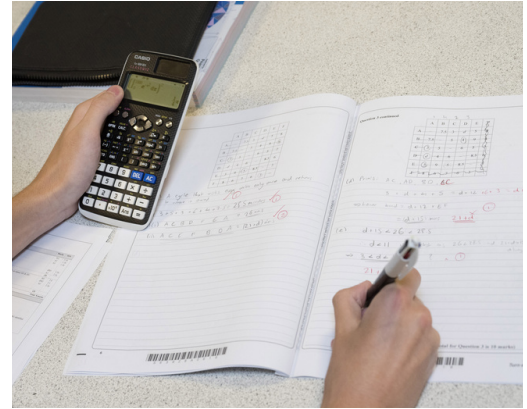
**Algebra:** Mastering equations, inequalities, and expressions. This includes solving problems using algebraic methods and understanding functions.

**Ratio, Proportion and Rates of Change:** Understanding ratios, proportions, and how quantities change over time. This involves setting up and solving problems involving rates and percentages.

**Geometry and Measures:** Exploring geometrical shapes, their properties, and how to calculate areas, perimeters, and volumes. You'll also learn about measurement techniques and converting between units.

**Probability:** Understanding the likelihood of events happening and how to calculate probabilities.

**Statistics:** Collecting, analysing, and interpreting data. This involves creating presentations of data using tables, charts, and diagrams.



## How is this course assessed?

The Edexcel GCSE Maths course is assessed through three equally weighted written exams.

- **Exam Format:** There are two tiers available: Foundation and Higher. You will sit the tier best suited to your ability.
- **Exam Structure:** Each exam lasts 1 hour and 30 minutes and consists of 80 marks. Paper 1 is a non-calculator assessment, while Papers 2 and 3 allow calculators.

## What do you need to be successful on this course?

To succeed in Edexcel GCSE Maths, you'll need a positive attitude, a willingness to learn, and a commitment to developing your problem-solving skills. Here are some key qualities:

**Strong work ethic:** Regular practice and completing homework is crucial to mastering the concepts.

**Good numeracy skills:** A solid foundation in basic mathematical operations is essential.

**Ability to think logically:** Understanding the "why" behind the calculations is key to applying concepts effectively.

**Perseverance:** Don't be discouraged by challenges. Keep practicing and seek help when needed.

**We are excited to master GCSE maths with you!**

*For more information, please speak with Mrs Higgins.*

# Science



## What will you study?

The AQA Combined Science course covers a wide range of scientific concepts, equipping you with a strong foundation for your future. Here are some of the key areas you'll explore:

**Biology:** Cells and organ systems of the human body, infectious disease, respiration and photosynthesis, inheritance, and ecology.

**Chemistry:** Atoms and the periodic table, structure and bonding, quantitative chemistry, chemical changes, the Earth, and its resources.

**Physics:** Energy and electricity, the particulate nature of matter, force, waves, and magnetism.

## How is this course assessed?

The AQA Combined Science GCSE course is assessed through six equally weighted written exams. From this you will gain 2 GCSE qualifications.

- **Exam Format:** There are two tiers available: Foundation and Higher. You will sit the tier best suited to your ability.
- **Exam Structure:** Each exam lasts 1 hour and 15 minutes and consists of 70 marks. There are two papers for each of the three sciences, splitting the subject into two halves. You can expect to have covered all the content for paper 1 before the end of year 10.



## What do you need to be successful on this course?

To succeed in AQA GCSE Combined Science, you'll need a positive attitude, a willingness to learn, and an appreciation of the importance of science in daily life, the workplace, and the future of humanity. Here are some key qualities:

**Strong work ethic:** Science is a content rich subject so being prepared to work hard each lesson and completing homework is crucial to deepening your knowledge and skills.

**An enquiring mind:** Science is about the how and the why of the world around us. The knowledge that you gain from AQA GCSE Combined Science, will help you to appreciate how we have and will solve the greatest challenges to humanity.

**Good numeracy skills:** The skills you learn in maths also play an important part in all three of the sciences. Being able to spot where the skills you have learnt in maths apply to science will be vital.

**Ability to think logically and analytically:** Science is evidence based, be able to think critically about data, spot correlations and use your scientific knowledge to explain this will be important.

**Perseverance:** Science is topic based; each topic can be very different. This means that you may find you have a talent in a particular area. Areas that you find more challenging you will need to be prepared to make the extra effort needed to master that knowledge or skill.

*For more information, please speak with Mrs Dadzie.*

# History



## What will you study?

The AQA GCSE History course covers a wide range of historical skills and topic areas, allowing you to understand the past to unlock your understanding of the present world and those who live in it. There are four topics:

**Britain: Health and the People:** A study of the development of medicine (disease and infection, surgery and anatomy, public health) from c.1000 AD to the present day. This topic is built around several key stories, many of which will be familiar to you. You will also work on your source analysis skills.

**Elizabethan England: 1568-1603:** A study of the most successful Tudor monarch, Elizabeth I. This module includes understanding key concepts such as the idea of a Golden Age, England's conflict with Spain, Mary Queen of Scots and plots to remove Elizabeth and the role religion played in people's lives and wider politics. A great chance to study an amazing female historical figure. You will also work on your interpretation analysis skills.

**Germany: Democracy and Dictatorship: 1890-1945:** A study of Germany from Kaiser Wilhelm II, to the impact of the First World War and the creation of Weimar Germany, to the rise of Hitler and life in Nazi Germany. This is the story of how German identity changes. You will also work on your interpretation skills.

**Conflict and Tension between East and West: 1945-1972:** A study of the Cold War, a conflict of spies, proxy wars, the threat of nuclear weapons and high-tension events between the USA and USSR following the Second World War. You will also work on your source analysis skills.

## What do you need to be successful on this course?

To succeed in AQA GCSE History, you'll need a passion for the past, a willingness to discover the lives of other people and an understanding as to why history is such an important subject in shaping your future career. Here are some key qualities:

**Strong work ethic:** Regular practice and completing homework is crucial to mastering the concepts.

**Good literacy skills:** History is assessed on your ability to communicate effectively and often at length in writing. You tend to write as much or more than you would for English Literature!

**Ability to analyse and evaluate:** You'll need to examine sources and interpretations (opinions) that you will have never seen before! You'll need to think originally and independently and accept that there are lots of ways of interpreting the past.

**Organisation:** There's a lot of knowledge to learn, but there are clever ways of organising this knowledge that we can teach you! Commit to organising yourself from the beginning.

**We look forward to working with our budding historians!**

## How is this course assessed?

The AQA GCSE History course is assessed with two equally weighted written examinations.

- **Exam Format:** There is only one tier of examination. Paper 1 consists of the international topics (Germany and the Cold War) and Paper 2 consists of the British topics (Health and Elizabethan England). You have between 4-6 questions per topic. For the Elizabethan England topic, there is a 16-mark Historical Environment question based on a place that you will have studied in advance.
- **Exam Structure:** Each exam is 2 hours long (1 hour per topic). Both Paper 1 and Paper 2 are out of 84 marks each, with both exams combining to 168 marks in total.



**For more information, please speak with Mr Dorr.**



# Geography



## What will you study?

The Eduqas Spec B GCSE Geography course covers a wide range of geographical skills and topic areas, equipping you with the knowledge to make sense of the physical and human world around you, whilst preparing you to contribute to solving the human made problems we face in our local, national and international environments. There are three components:

### **Component 1: Investigating geographical issues:**

A study of a mixture of human and physical topics; climate change, flooding, coastal management, world trade, hurricanes, development, and desertification.

**Component 2: Problem solving geography:** Here you'll use your geographical knowledge to understand real life geographical problems and analyse and assess the possible solutions.

**Component 3: Applied fieldwork enquiry:** A study of how to conduct your own geographical research. You will study the methods that go into gathering data in human and physical geographical situations and then apply these in real life situations. You will attend two fieldtrips during the course where you will carry out your own primary data collection.



## How is this course assessed?

There is only one tier of examinations. The Eduqas Spec B GCSE Geography course is assessed by 3 examinations.

- **Component 1:** 40% of the course – a 1hr 45mins examination.
- **Component 2:** 30% of the course – a 1hr 30mins examination.
- **Component 3:** 30% of the course – a 1hr 30mins examination.

## What do you need to be successful on this course?

To succeed in Eduqas Spec B GCSE Geography, you'll need a passion for exploring the world around you and an appreciation for the importance of geography in unlocking some of the greatest challenges that face our planet. You'll need to be open-minded and be willing to understand complex problems rather than jumping to incorrect conclusions. Here are some key qualities:

**Strong work ethic:** Regular practice and completing homework is crucial to mastering the concepts.

**Conceptual awareness:** There's lots to know about the world. Having a basic grasp of continents, oceans, mountain ranges, rivers, climates and weather systems, and even major cities is a huge steppingstone towards success in geography.

**Good numeracy skills:** The study of geography can only happen by collecting and analysing data. You'll need to have confident maths skills to access much of the information coming your way.

**Ability to analyse and evaluate:** You'll need to examine a wide variety of data. You'll need to think independently when interpreting this information. You'll also need to work out how our world is interlinked, often in surprising ways.

**Organisation:** There's a lot of knowledge to learn, but there are clever ways of organising this knowledge that we can teach you! Commit to organising yourself from the beginning.

*For more information, please speak with Mr Bowker.*

# Philosophy, Ethics & Religion (PER): Full Course



## What will you study?

The AQA Religious Studies course will cover religious teachings, and religious, philosophical arguments, relating to the issues that follow, and their impact and influence in the modern world. Here are some key concepts you will explore:

**Theme A – Marriage & Family:** Sexuality, Contraception, Marriage, Same sex marriage, Re-marriage, Cohabitation, Divorce, Nature of Families, Role of Parents, Gender equality.

**Theme B – Religion & Life:** Origins of the universe; Big Bang theory, Evolution, Creation, Value of the world; Stewardship & Dominion, Use and abuse of the environment, Use and abuse of animals, Abortion, Euthanasia, Afterlife.

**Theme E – Crime & Punishment:** Reasons for crime, Different types of crime, Aims of Punishment, Treatment of criminals, Prisons, Community Service, Corporal Punishment, Death Penalty, Forgiveness.

**Theme F – Human Rights:** Social justice, Human Rights, Prejudice and discrimination, positive discrimination, Freedom of expression, Freedom of belief, Use of wealth, Poverty, Charities, Gender equality.

**Islam Beliefs:** Nature of Allah, Life of Prophet Muhammad, Split in Islam, 5 roots in Shi'a Islam, 6 articles of faith; Tawhid, Angels, Afterlife, Prophethood, Holy Books, Predestination, Imamate.

**Islam Practices:** 5 Pillars of Islam; Shahadah, Salah, Sawm, Zakah, Hajj, festivals, Jihad, 10 Obligatory acts.

**Christianity Beliefs:** Nature of God, Trinity, Incarnation, Creation, Crucifixion, Resurrection, Ascension, Afterlife and Judgement, Heaven and Hell, Sin and Salvation, Atonement.

**Christianity Practices:** Types of prayer and worship, Sacraments; Baptism and Holy Communion, Pilgrimage, Festivals, Role of Church in the worldwide community; Charities, Street Pastors, Persecution, Reconciliation.

## How is this course assessed?

The AQA Religious Studies course is assessed through two equally weighted written exams.

### **Exam structure:**

- Each exam lasts 1 hour 45 minutes.
- Paper 1: The study of Religions
- Paper 2: Textual studies
- Each section has common structure of two five-part questions of 1, 2, 4, 5 and 12 marks. Each is marked out of 24.

## What do you need to be successful on this course?

To succeed in AQA GCSE Religious Studies, you'll need a positive attitude, a willingness to learn, and a commitment to developing your analytical skills.

**Here are some key qualities:**

**Engage in and apply the skills of enquiry.**

**Use questioning and analytical skills to support exploration and contemplation.**

**Think critically about and evaluate religious and non-religious beliefs, teachings, practices, values, and philosophical convictions.**

*For more information, please speak with Miss Rasib.*

# Philosophy, Ethics & Religion (PER): Short Course



## What will you study?

The AQA Religious Studies course will cover religious teachings, and religious, philosophical arguments, relating to the issues that follow, and their impact and influence in the modern world. Here are some key concepts you will explore:

**Theme A – Marriage & Family:** Sexuality, Contraception, Marriage, Same sex marriage, Re-marriage, Cohabitation, Divorce, Nature of Families, Role of Parents, Gender equality.

**Theme D – Peace & Conflict:** Peace, Forgiveness, Justice, Reconciliation, Reasons for war, Holy War, Responses to victims of war, Violence, Protests, Terrorism, Pacifism, Nuclear weapons, Weapons of mass destruction, Religion and peace-making.

**Islam Beliefs:** Nature of Allah, Life of Prophet Muhammad, Split in Islam, 5 roots in Shi'a Islam, 6 articles of faith; Tawhid, Angels, Afterlife, Prophethood, Holy Books, Predestination, Imamate.

**Christianity Beliefs:** Nature of God, Trinity, Incarnation, Creation, Crucifixion, Resurrection, Ascension, Afterlife and Judgement, Heaven and Hell, Sin and Salvation, Atonement.

## How is this course assessed?

The AQA Religious Studies course is assessed through a written exam.

### **Exam structure:**

- Exam lasts 1 hour 45 minutes
- Each section has common structure of two five-part questions of 1, 2, 4, 5 and 12 marks.
- Each section is marked out of 24.



## What do you need to be successful on this course?

To succeed in AQA GCSE Religious Studies, you'll need a positive attitude, a willingness to learn, and a commitment to developing your analytical skills.

**Here are some key qualities:**

**Engage in and apply the skills of enquiry.**

**Use questioning and analytical skills to support exploration and contemplation.**

**Think critically about and evaluate religious and non-religious beliefs, teachings, practices, values, and philosophical convictions.**

*For more information, please speak with Miss Rasib.*

# Art



## What will you study?

The AQA GCSE Art course covers a wide range of techniques and processes. Here are some of the techniques you'll explore:

- Drawing
- Painting
- Photography and the moving image
- Printmaking
- Mixed media

You will also use a variety of media and materials, for example:

- Charcoal, pastels, pen and ink, crayons and pencil
- Watercolour, gouache, acrylic and oil paint
- Found materials
- Clay, wood and metal
- Digital imagery
- Different papers and surfaces on which to work.



## What do you need to be successful on this course?

Spend at least TWO hours per week on Independent Learning.

Read and remember the four Assessment Objectives (or AOs) to help you make sure that you are on target.

Meet all deadlines.

Bring your SKETCHBOOK and BASIC EQUIPMENT to every lesson.

Do not be afraid of making mistakes – this is a vital part of developing as an artist.

Complete photoshoots for your chosen artist.

## How is this course assessed?

### **Component 1: Portfolio (60% of GCSE)**

A portfolio that in total shows explicit coverage of the four assessment objectives. You will start off looking at different portrait artists and then begin to explore your own tailored journey. Your work will include a sustained project evidencing the journey from initial engagement to the realisation of intentions and a selection of further work undertaken during the student's course of study.

### **Component 2: Externally set assignment (40% of GCSE)**

Students respond to their chosen starting point from an externally set assignment paper relating to their subject title, evidencing coverage of all four assessment objectives.

*For more information, please speak with Mr C Wilson.*

# Art Textiles



## What will you study?

**During year 10** you will learn all the processes and techniques that you will need for the next two years. You will learn how to construct a piece of fabric: weaving, applique and ruffles, how to apply colour to fabric, painting, dyeing and printing, how to use the sewing machines and manipulate fabrics. Using the sewing machines, you will experiment with machine embroidery as well as creating hand embroidery pieces. You will be asked to complete research based on a variety of artists and designers. You will then use that research to develop your ideas for a final piece in response to the theme of natural forms.

**Your final piece in year 11** could be a piece of clothing or a piece of textiles such as a wall hanging.

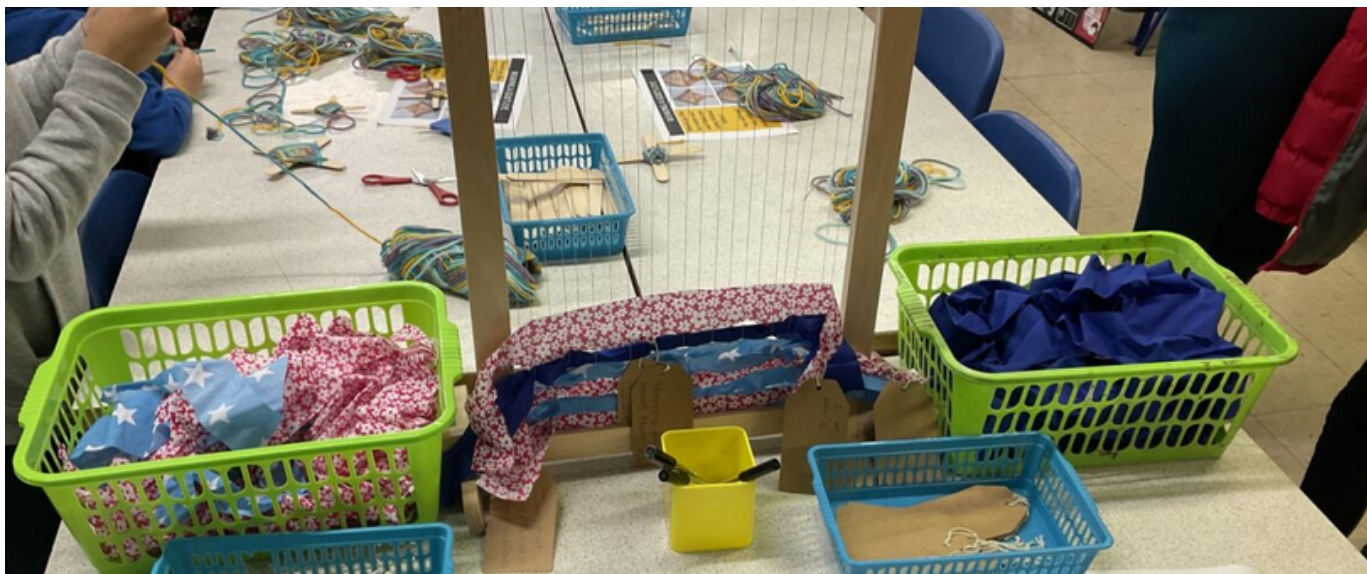
## How is this course assessed?

### **Component 1 (60% of your final grade):**

You will complete a portfolio during year 10 showing your creative response to the subject, theme or brief including drawing, photography, artist investigations, trials, experiments and making creative textile products.

### **Component 2 (40% of your final grade):**

You will sit the exam in year 11. It will consist of preparatory work and a 10-hour exam which you complete in a classroom environment.



## What do you need to be successful on this course?

To be an organised independent learner who can design and draw.

Creative and have a strong interest in Art and Textiles.

Develop new ideas and products.

Produce drawings of you work and well written annotations to articulate your ideas.

*For more information, please speak with Mr C Wilson.*

# Citizenship



## What will you study?

The AQA Citizenship course will cover a deeper knowledge of democracy, government, and law, and develop skills to create sustained and reasoned arguments, present various viewpoints, and plan practical citizenship actions to benefit society.

### Here are some key concepts you will explore:

**Active Citizenship:** You will understand citizenship issues, develop your research skills, and enable you to develop an understanding of the methods and processes citizens can use when they are trying to make a difference or trying to have their say.

**Politics & Participation:** You will look at the nature of political power in the UK and the core concepts relating to democracy and government. This includes how government operates at its various levels within the UK, how decisions are made and how the UK parliament works and carries out its functions. It also looks at the role of political parties, the election system, how other countries govern themselves and how the citizen can bring about political change.

**Life in Modern Britain:** You will look at the make-up, values, and dynamics of contemporary UK society. They will consider what it means to be British, how our identities are formed and how we have multiple identities. Students will also look at the role and responsibilities of the traditional media, the impact of new media formats and the UK's role in international issues.

**Rights & Responsibilities:** You will look at the nature of laws and the principles upon which laws are based, how the citizen engages with legal processes, how the justice system operates in the UK, how laws have developed over time and how society deals with criminality. Students will consider also how rights are protected, the nature of universal human rights and how the UK participates in international treaties and agreements.

## How is this course assessed?

The AQA Citizenship course is assessed through two equally weighted written exams.

**Exam structure:** Exam lasts 1 hour 45 minutes

### Paper 1:

**Section A:** Active Citizenship (40 marks)

**Section B:** Politics and Participation (40 marks)

### Paper 2:

1. Life in Modern Britain (40 marks)

2. Rights and Responsibilities (40 marks)

## What do you need to be successful on this course?

To succeed in AQA GCSE Citizenship, you'll need a positive attitude, a willingness to learn, and a commitment to developing your research skills.

### Here are some key skills needed:

Citizenship skills

Advocacy skills

Evaluation skills

*For more information, please speak with Miss Rasib.*

# Computer Science



## What will you study?

The qualification is made up of 2 papers:

### Paper 1 – Principles of Computer Science

- Computational thinking
- Data
- Computers
- Networks
- Issues and impact

### Paper 2 – Application of computational thinking

- Understanding what algorithms are, what they are used for, and how they work.
- Understanding how to decompose and analyse problems.
- Ability to read, write, refine, and evaluate problems.

You will develop a variety of skills such as computer programming languages, critical thinking, software development, learning independently, computer related mathematics, problem solving, technical writing, data analysis and time management.

## What do you need to be successful on this course?

To succeed in Computer Science, you'll need a positive attitude, a willingness to learn, and a commitment to developing your problem-solving skills. **The two papers each have a minimum of 8% of the marks allocated to the assessment of computer-related mathematics.**

Here are some key qualities:

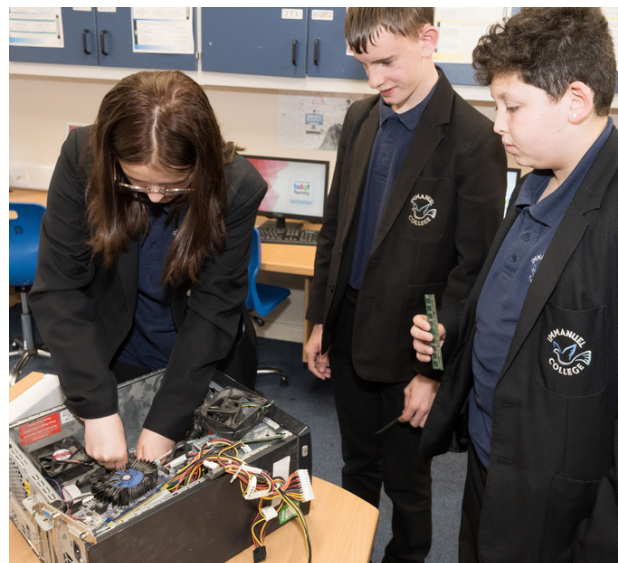
**Strong work ethic:** Regular practice and completing homework is crucial to mastering the concepts.

**Good digital literacy:** A solid foundation in ICT software is essential.

**Ability to think logically:** Understanding the "why" behind the calculations is key to applying concepts effectively.

**Perseverance:** Don't be discouraged by challenges. Keep practicing and seek help when needed.

**Independent research skills:** will be needed when completing coursework and an ability to meet deadlines and be organised with all written work.



## How is this course assessed?

### Paper 1 – Written examination lasting 1hr 30 mins (50% of the overall mark)

This paper consists of 5 compulsory questions, each one is focused on one of the 5 topic areas. The questions consist of multiple-choice, short, medium, extended open response, tabular and diagrammatic items.

### Paper 2 – On screen lasting 2hrs (50% of the overall mark)

This practical paper requires students to design, write, test and refine a computer program in order to solve problems. The assessment consists of 6 compulsory questions, which students should answer on the screen using Python 3.

*For more information, please speak with Mr Middleton.*

# Drama



## What will you study?

The Edexcel GCSE Drama course covers a wide range of drama skills and techniques which will not only provide you with the ability to become successful in Drama but also essential life skills for your future. Within this course, you can be assessed as either a performer or as a technical theatre designer (lighting, sound, costume etc.)

### Some of the key areas you'll explore are:

**Devising:** You will be required to devise your own original performance material using various stimuli. You will also be required to develop performance material using existing scripted performances.

**Performing/Designing:** You will be required to work as either a performer or and a technical theatre designer to create unique and engaging performances for an audience.

**Evaluating:** You will be required to visit the theatre and watch live performances and evaluate the effectiveness of performances, exploring both the acting and how well the technical elements of theatre have been used.

## How is this course assessed?

The Edexcel GCSE Drama course is assessed through three equally weighted written exams.

- **Component 1:** Component 1 in total is worth 40% of the overall GCSE. This unit is internally assessed and moderated by the exam board. Within this unit, you will be required to work as part of a group to devise an original performance using a chosen stimulus. You can work as either an actor or as a theatrical designer to bring the performance to life. The performance/theatre presentation is worth 15 marks. You will then be required to complete a portfolio which explores decisions and choices you made for your devised performance and the overall effectiveness. This is worth 45 marks.
- **Component 2:** This unit is worth 20% of the overall GCSE and is entirely practical based. You will have to perform 2 key extracts from a chosen play to a visiting examiner. You can perform as different characters. If you choose to be assessed in technical theatre, you will complete your theatrical design for 2 key extracts and you will present your ideas to a visiting examiner.
- **Component 3:** This unit is an exam-based unit, section A (the play) is worth 45 marks and section B (live theatre evaluation) is worth 15 marks. Overall, this component is worth 40% of GCSE. You will explore a play and how to develop this from the perspective of a performer, director, and designer. You will also visit the theatre and complete a live theatre evaluation based upon this.

## What do you need to be successful on this course?

To succeed in Edexcel GCSE Drama, you'll need a positive attitude, a willingness to learn, strong teamwork and communication skills and a commitment to developing your problem-solving skills.

**Strong work ethic:** Regular rehearsals both in and out of lesson time, completing homework and research to support your performance is crucial to being successful in Drama.

**Organisation skills:** The ability to organise your rehearsal time to ensure that your devised work is productive. Ensuring that you plan and organise tasks in your own time such as learning lines and completing research to ensure you are fully prepared for lessons.

**Ability to think creatively:** Exploring different performance styles and genres to develop your performance work will be a key part of the course. You need to show a willingness to try different ideas and combine these to improve your performance work.

**Perseverance:** Don't be discouraged by challenges. Working collaboratively with your peers and seeking help for your teachers will ensure you can succeed.

*For more information, please speak with Mrs Baxter.*



# Film Studies



## What will you study?

The Eduqas GCSE Film Studies course covers a wide range of film genres, forming a strong foundation for study and careers in the fields of film and TV production, communications, advertising and more. Below are the films you will study. For each film listed, you will analyse the film's meanings in detail, with a focus on the Key Elements of Film Form (KEOFF)—including audio, cinematography and editing, and mise-en-scène. You will also study the film's contexts—including film industry context, social/cultural contexts and, where possible, historical context. Each film also has its own specialist study area; these areas are outlined below.

- **British film: Skyfall (2012)** – specialist study area of aesthetics.
- **Global English language film: District 9 (2009)** - specialist study area of narrative.
- **Global non-English language film: The Wave (2008)** - specialist study area of representation.
- **'Old' Hollywood: Invasion of the Body Snatchers (1956)** – specialist study area of developments in film technology and genre.
- **'New' Hollywood: ET (1982)** – specialist study area of developments in film technology and genre.
- **Independent film: The Hurt Locker (2008)** – specialist study area of theoretical perspectives on film.

## How is this course assessed?

The Eduqas GCSE Film Studies course is assessed through two exam papers and a coursework unit. Each unit is worth approximately a third of your overall grade.

### **Exam: Component 1 - Key Developments in US Film, 1 hour 30 minutes, worth 35% of the GCSE.**

- Section A: US Film Comparative study.
- Section B: Key developments in Film and Film Technology.
- Section C: US independent Film.

### **Exam: Component 2 – Global Film: Narrative, Representation and Film Style, 1 hour 30 minutes worth 35% of the GCSE.**

- Section A: Global English Language Film.
- Section B: Global Non-English Language Film.
- Section C: Contemporary UK film.

### **Controlled Assessment: Production (30% of grade)**

- You will produce a film product (film extract or screenplay) and will evaluate its success and effectiveness compared to professionally produced examples.

## What do you need to be successful on this course?

You will enjoy in-depth analysis of meanings in films. This course is therefore particularly well-suited to those who enjoy English lessons.

You should enjoy watching and be enthusiastic about film across a range of genres and styles.

You should have the ability to be creative and come up with new and interesting ideas.

You should be willing to try things out and to learn in a practical way both as part of a group and on your own.

You should be willing to work hard both in lessons and in your own time to develop your knowledge.

*For more information, please speak with Mr Brough.*

# Food Preparation & Nutrition



## What will you study?

Students studying GCSE food Preparation and Nutrition will develop an understanding of the importance of health and nutrition throughout life.

Students will learn about the scientific principles that underlie preparation and cooking of food through active investigation and experimentation.

Students will apply the principles to prepare and cook a repertoire of foods and dishes from cultures around the globe.

Food preparation and nutrition focuses on improving practical cookery skills and will help you to develop a strong understanding of nutrition. It will allow those students who have an interest in cooking and nutrition to explore more widely a range of recipes and to find out more about food science. There will be many opportunities for students to make their own products; this is especially the case in the non-exam assessment where students design and make their own choice of menu which is created within an extended practical exam.



## How is this course assessed?

The course is split into 2 assessments both equally weighted a controlled assessment and a final exam.

### **Controlled assessment completed in class worth 50% of the overall GCSE.**

- Task 1: Food investigation (10 hours) where you will complete a report that is around 2,000 words, this will include photographic evidence of the practical investigation. 15%
- Task 2: A preparation portfolio (20 hours) culminating in a 3 hour practical exam, including photographic evidence the three final dishes must be included. 35%

**Written exam: 1 hour 45 minutes 100 marks and worth 50% of the overall GCSE.**

## What do you need to be successful on this course?

Enthusiasm for healthy eating and a passion for practical cooking skills.

You should have an interest in making different meals and products and be interested in finding out more about different ingredients.

You should have good time keeping and be confident in your ability when writing and analysing.

You should have good communication skills and be able to be independent in your practical work.

*For more information, please speak with Mrs Restrick.*

# French



## What will you study?

The GCSE French course covers a wide range of current topics that are discussed in everyday life, such as:

**My personal world** – Family, friends, and relationships.

**Lifestyle and wellbeing** – Health, including physical and mental well-being.

**My neighbourhood** – Describing your local area.

**Media and technology** – social media, technology of the future and celebrity culture.

**Studying and my future** – Comparing the education systems between the UK and French speaking countries.

**Travel and tourism** – Tourist attractions in French speaking countries and holidays.

## What do you need to be successful on this course?

**Good at talking. Language is all about communication and sharing ideas.**

**Resilient and willing to get out of your comfort zone.**

**Able to present your ideas in a new & exciting way.**

**Able to remember a lot of new words & phrases.**

**A person with focus, determination, and ambition - you cannot become fluent in a language overnight - little and often is the key to learning a language.**

## How is this course assessed?

**Exam Format:** There are two tiers available: Foundation and Higher. You will sit the tier best suited to your ability. The GCSE French course will be assessed by four different skills. These will have equal weighting.

**Listening – 25%:** Section A: questions in English to be answered in English, Section B: Questions in French to be answered in French.

**Reading – 25%:** Section A: questions in English to be answered in English, Section B: Questions in French to be answered in French.

**Speaking – 25%:** Role play, photo card and general conversation

**Writing – 25%:**

- **Foundation:** Describe a photo, 40-word task, 90-word task and translating 5 sentences
- **Higher:** 90-word task, 150-word task, translating 1 paragraph



*A different language is a different vision of life: Federico Fellini*

*For more information, please speak with Mrs Stringer.*

# Media Studies



## What will you study?

The Eduqas GCSE Media Studies course covers a wide range of media types, forming a strong foundation for study and careers in the fields of journalism, film, communications, advertising and more. Here are some of the key areas you'll explore:

- **Newspapers:** The UK newspaper industry and its political context—including governmental structure and relevant legislation—will be explored through study of print newspapers and their digital counterparts.
- **Advertising:** One print advertisement from the modern era and one from the 1950s.
- **Film:** Posters for James Bond films past and present, as well as the production, distribution and marketing of Bond films.
- **Radio:** BBC Radio 4 and The Archers.
- **Video games:** Epic Games and Fortnite—including production, distribution, marketing, and audience engagement.
- **TV dramas:** Luther (2010) and The Sweeney (1973)—including analysis, production, distribution, marketing, and audience engagement.
- **Music videos:** Good as Hell (Lizzo, 2019), Uptown Funk (Bruno Mars, 2015) and Rio (Duran Duran, 1982)—including analysis, production, distribution, marketing, and audience engagement.

## How is this course assessed?

The Eduqas GCSE Media Studies course is assessed through two exam papers and a coursework unit. Each unit is worth approximately a third of your overall grade.

### **Exam: Comp. 1 (40%) – Exploring the Media (1hr 30mins)**

- You will answer questions on a range of newspapers, advertisements, magazine covers, films and radio clips that you have studied throughout the course. You will also receive some previously unseen materials to analyse.

### **Exam: Component 2 (30%) – Understanding Media Forms and Products (1hr 30mins)**

- This exam builds on your Component 1 exam, introducing questions on TV shows, music videos, and popstars' social media pages and websites.

**Coursework (30%):** You will apply your understanding of the media in order to produce your own magazine (i.e. a cover, contents page and article) or your own film promotion (i.e. a poster and DVD cover). You will also write a short piece explaining your choices and how they appeal to your target audience.

## What do you need to be successful on this course?

To succeed in Eduqas GCSE Media Studies, you will enjoy in-depth analysis of meanings in media products. This means that as well as working hard in lessons, you should be keen to pay close attention every time you watch a film, play a music video, or load a video game. You should also be willing to take an interest in news and current affairs—whether that means reading the news on your phone, watching news channels, listening to the radio, or reading newspapers and magazines.

This course is therefore particularly well-suited to those who enjoy English lessons and good English skills are helpful as you will be expected to analyse media products in similar ways to how you might analyse a text extract or novel.

*For more information, please speak with Mr Brough.*

# Photography



## What will you study?

The AQA GCSE Photography course offers a creative pathway for learners that want to work digitally and enjoy taking photos. Below are some of the things that the course covers:

**Photoshop:** This is a software program that you will use to edit photos. We use this extensively and you will become very skilful in this.

**Photoshoots:** You will be tasked to complete photoshoots for each photographer we look at. It is important that these are completed to a high standard, and you meet deadlines.

**SLR camera:** The school has 2 SLR digital cameras which have a high specification. You will have access to these to complete your photoshoots.

**Presentation:** Presentation is key when completing the Photography GCSE. You will carefully need to consider how best to present your work to a high standard.



## What do you need to be successful on this course?

Spend at least TWO hours per week on Independent Learning.

Read and remember the four Assessment Objectives (or AOs) to help you make sure that you are on target.

Meet all deadlines.

Do not be afraid of making mistakes – this is a vital part of developing as an artist.

Complete photoshoots for your chosen artist.

## How is this course assessed?

### **Component 1: Portfolio (60% of GCSE)**

A portfolio that in total shows explicit coverage of the four assessment objectives. You will start off looking at different photographers and then begin to explore your own tailored journey. Your work will show a sustained project evidencing the journey from initial engagement to the realisation of intentions and a selection of further work undertaken during the student's course of study.

### **Component 2: Externally set assignment (40% of GCSE)**

Students respond to their chosen starting point from an externally set assignment paper relating to their subject title, evidencing coverage of all four assessment objectives.

*For more information, please speak with Mr C Wilson.*

# Spanish



## What will you study?

The GCSE Spanish course covers a wide range of current topics that are discussed in everyday life, such as:

**My personal world** – Family, friends, and relationships.

**Lifestyle and wellbeing** – Health, including physical and mental well-being.

**My neighbourhood** – Describing your local area.

**Media and technology** – social media, technology of the future and celebrity culture.

**Studying and my future** – Comparing the education systems between the UK and Spanish speaking countries.

**Travel and tourism** – Tourist attractions in Spanish speaking countries and holidays.

## What do you need to be successful on this course?

Good at talking. Language is all about communication and sharing ideas.

Resilient and willing to get out of your comfort zone.

Able to present your ideas in a new & exciting way.

Able to remember a lot of new words & phrases.

A person with focus, determination, and ambition - you cannot become fluent in a language overnight - little and often is the key to learning a language.

## How is this course assessed?

**Exam Format:** There are two tiers available: Foundation and Higher. You will sit the tier best suited to your ability. The GCSE Spanish course will be assessed by four different skills. These will have equal weighting.

**Listening – 25%:** Section A: questions in English to be answered in English, Section B: Questions in Spanish to be answered in Spanish.

**Reading – 25%:** Section A: questions in English to be answered in English, Section B: Questions in Spanish to be answered in Spanish.

**Speaking – 25%:** Role play, photo card and general conversation

**Writing – 25%:**

- **Foundation:** Describe a photo, 40-word task, 90-word task and translating 5 sentences
- **Higher:** 90-word task, 150-word task, translating 1 paragraph



*A different language is a different vision of life: Federico Fellini*

**For more information, please speak with Mrs Stringer.**

# BTEC Tech Award in Art & Design



## What will you study?

The Tech Award gives students the opportunity to develop their skill and knowledge through realistic vocational contexts. Students will have the opportunity to develop knowledge and skills in the following areas:

**Effective use of skills, process and attitudes** in a creative process, art and design disciplines and approaches, materials, techniques, and processes.

**Development of key skills** such as generating and visually communicating creative responses to art and design briefs.

**Effective ways of working in the creative industries** such as generating ideas, prototyping, development, review, and refinement.

**Attitudes** that are considered most important in art and design practice, including planning, organisation, and communication.

## How is this course assessed?

The course consists of two units:

**Component 1: Creative Practice in Art and Design** - Non-exam internal assessment set by Pearson, marked by the centre and moderated by Pearson.

**Component 2: Responding to a Brief** - Task set and marked by Pearson, completed under supervised conditions.

### **Assessment objectives**

- **AO1:** Demonstrate understanding of the requirements of a brief.
- **AO2:** Develop and produce a response to a brief.
- **AO3:** Present a response to a brief.



## What do you need to be successful on this course?

To be successful on the BTEC art course you will need to:

Work hard every lesson.

Be creative and hard working.

Be organised and meet deadlines.

Do not be afraid of making mistakes – this is a vital part of developing as an artist.

Develop confidence in using photoshop for editing photographs.

*For more information, please speak with Mr C Wilson.*

# BTEC Tech Award in Child Development



## What will you study?

The Tech Award gives learners the opportunity to develop applied knowledge and understanding of child development and growth up to the age of five, how children learn through play and how meeting the needs of individual children will support their development, play and learning.

In a practical learning environment, learners will have the opportunity to develop applied knowledge in the following areas:

**The characteristics of children's development from birth up to five years.**

**Factors that affect growth and development.**

**The importance of play.**

**How play promotes children's learning and development.**

**Reasons why children may need support.**

**Child-friendly environments to support play, learning and development in children from birth to five years old.**

**Supporting all children to learn and develop physically, intellectually, emotionally, and socially, and adapting activities to support children's play, learning and development.**

## How is this course assessed?

**The course is split into 3 components.**

Components 1 and 2 are internally assessed coursework assignments and account for 60% of the final grade. Component 3 is an external exam which counts for 40% of the final grade.

**Component 1:** Children's Growth and Development, a series of internal assignments which you will complete during the course. Strict deadlines will be given for the internal assignments so you must be well organised and motivated to meet deadlines.

**Component 2:** Learning through play, a series of internal assignments which you will complete during the course. Strict deadlines will be given for the internal assignments so you must be well organised and motivated to meet deadlines.

**Component 3:** Supporting Children to Play, Learn and Develop an external written exam that requires learners to demonstrate they can identify and effectively use an appropriate selection of skills, techniques, concepts, theories, and knowledge of child development.

## What do you need to be successful on this course?

To succeed in the Child Development Tech Award, you will need a positive attitude, a willingness to learn, and a commitment to developing your problem-solving skills. Here are some key qualities:

**Keen interest for the childcare field:** A curiosity in understanding how a child develops, learns through play in the first 5 years of their life.

**Strong work ethic:** Regular practice and completing homework is crucial to mastering the concepts.

**Good time management:** Meeting assignment deadlines to ensure you stay on track.

**Ability to think logically:** Understanding the "why" behind the impact on the development of people across their life span is key to applying concepts effectively.

**Perseverance:** Do not be discouraged by challenges. Keep going and seek help when needed.

*For more information, please speak with Mrs Yasmin.*



# BTEC Tech Award in Enterprise



The BTEC Technical Award in Enterprise has been designed to provide an engaging and stimulating introduction to the world of business. The aim of the course is to encourage personal development of knowledge and skills relevant to the business world through practical participation in a range of vocational business activities. This course will give you the opportunity to enter employment in the business sector or to progress to other vocational qualifications, such as the Edexcel BTEC Level 3 Nationals in Business.

## What will you study?

**Component 1 – Exploring Enterprise:** Explore how market research helps enterprises meet customer needs and understand competitor behaviour; investigate the factors that contribute to the success of an entrepreneur.

**Component 2 – Planning and pitching an enterprise activity:** Explore ideas and plan for a micro-enterprise activity; pitch a micro-enterprise activity; review own pitch for a micro-enterprise activity.

**Component 3 - Promotion and Finance:** Demonstrate knowledge and understanding of elements of promotion and financial records; interpret and use promotional and financial information in relation to a given enterprise; make connections between different factors influencing a given enterprise; be able to advise and provide recommendations to a given enterprise on ways to improve its performance.

## How is this course assessed?

**Components 1 and 2** are coursework based and worth 60% of your overall grade, marked internally by the assessor/teacher and moderated by Edexcel.

**Component 3** is worth 40% and is an externally assessed examination marked by Edexcel which must be taken in the final year of the course.

## What skills will you develop?

- Knowledge and understanding of business functions, environments and operations in a practical way that is relevant to today's work environment.
- Interpersonal, communication and presentation skills.
- Research, application and analytical skills through investigative work.
- Independence to select and apply skills through processes and effective use of resources.
- Team working, time management, personal organisation and problem-solving skills.

## What do you need to be successful on this course?

You will be expected to complete a written examination and two units of coursework. During lessons tasks will mostly be written using ICT, but there are also practical tasks; such as presentations throughout the course. To succeed in Enterprise, you'll need a positive attitude, a willingness to learn, and a commitment to developing your problem-solving skills. Here are some key qualities:

**Strong work ethic:** Regular practice and completing homework is crucial to mastering the concepts.

**Ability to think logically:** Understanding the "why" behind the calculations is key to applying concepts effectively.

**Perseverance:** Don't be discouraged by challenges. Keep practicing and seek help when needed.

**Independent research skills:** will be needed when completing coursework and an ability to meet deadlines and be organised with all written work.

---

*For more information, please speak with Mr Middleton.*

# BTEC Tech Award in Health & Social Care



## What will you study?

The Tech Award in Health & Social Care gives learners the opportunity to develop applied knowledge in the following areas:

The life stages and key characteristics in the physical, intellectual, emotional and social (PIES) development classifications and the varied factors that can affect an individual's growth and development.

Different life events and how individuals can adapt or be supported through changes caused by life events.

Health and social care conditions, how they can be managed by the individual and the different health and social care services that are available.

The barriers and obstacles an individual may encounter and how these can be overcome.

The skills, attributes and values required to give care and how these benefit the individual.

How factors can affect an individual's current health and wellbeing.

How physiological indicators and an individual's lifestyle choices determine physical health.

The use of the person-centred approach.

Recommendations and actions to improving health and wellbeing and the barriers or obstacles individuals may face when following recommendations and the support available to overcome.

## How is this course assessed?

The course is split into 3 components. Components 1 and 2 are internally assessed coursework assignments and account for 60% of the final grade. Component 3 is an external exam which counts for 40% of the final grade.

**Component 1:** Human life span development, a series of internal assignments which you will complete during the course. Strict deadlines will be given for the internal assignments so you must be well organised and motivated to meet deadlines.

**Component 2:** Health and Social Care Services and Values, a series of internal assignments which you will complete during the course. Strict deadlines will be given for the internal assignments so you must be well organised and motivated to meet deadlines.

**Component 3:** Health and Wellbeing, an external written exam that requires learners to demonstrate they can identify and effectively use an appropriate selection of skills, techniques, concepts, theories, and knowledge of child development.

## What do you need to be successful on this course?

To succeed in the HSC Tech Award, you will need a positive attitude, a willingness to learn, and a commitment to developing your problem-solving skills. Here are some key qualities:

**Keen interest for the health and social care field:** A curiosity in understanding the Health and Social care sector and different skills used by a variety of professionals within this field.

**Strong work ethic:** Regular practice and completing homework is crucial to mastering the concepts.

**Good time management:** Meeting assignment deadlines to ensure you stay on track.

**Ability to think logically:** Understanding the "why" behind the impact on the development of people across their life span is key to applying concepts effectively.

**Perseverance:** Do not be discouraged by challenges. Keep going and seek help when needed.

*For more information, please speak with Mrs Yasmin.*

# BTEC Tech Award in ICT



Are you passionate about technology? Do you like solving problems? Are you curious about all things digital, and want to learn some fantastic new skills? If so, it's time to uncover your potential – find out more about this exciting qualification today!

## What will you study?

You will develop a number of skills throughout this course including, good communication, coping with rapid changes in technology, critical thinking, designing, programming, testing and evaluating software systems, learning independently, numeracy and data handling, problem solving and time management.

**The qualification is made up of 2 units:**

### **Unit 1: ICT in Society You will:**

- Explore the wide range of uses of hardware, application, and specialist software in society.
- Investigate how information technology is used in a range of contexts, including business and organisations, education, and homes.

### **Unit 2: ICT in Context :**

- Gain a working knowledge of databases, spreadsheets, automated documents, and images.
- Learn to apply your knowledge and understanding to solve problems in vocational settings.

## What do you need to be successful on this course?

To succeed in ICT, you'll need a positive attitude, a willingness to learn, and a commitment to developing your problem-solving skills. Here are some key qualities:

**Strong work ethic:** Regular practice and completing homework is crucial to mastering the concepts.

**Good digital literacy:** A solid foundation in ICT software is essential.

**Ability to think logically:** Understanding the "why" behind the calculations is key to applying concepts effectively.

**Perseverance:** Don't be discouraged by challenges. Keep practicing and seek help when needed.

**Independent research skills:** will be needed when completing coursework and an ability to meet deadlines and be organised with all written work.

## How is this course assessed?

You will be assessed through a mixture of exams and controlled assessments.

**Unit 1** is assessed through an exam which is worth 40% of your qualification. The exam will last 1 hour and 20 minutes, it will be made up of short and extended response questions.

**Unit 2** is assessed through a coursework based project completed in class which is worth 60% of your qualification. As part of this assessment, you will be given a scenario and will need to undertake several tasks around how ICT is used to solve problems in real life situations and vocational settings.



*For more information, please speak with Mr Middleton.*

# BTEC Tech Award in Music Practice



## What will you study?

The Music Practice course includes a wide variety of Musical Skills including performing, composing, producing, and studying a wide range of different types of Music. The styles and genres you could explore:

**50s and 60s:** e.g. Rock 'n' roll, British invasion, Folk revival, Motown and Soul, Psychedelic.

**70s and 80s:** e.g. Heavy metal, Prog, Punk, Disco, Reggae, Synth pop, Hip-hop, Post punk, Hardcore.

**90s to present:** e.g. Grunge, Britpop, Rave, Techno, House, Drum and bass, Nu-metal, Pop punk, Dubstep, Reggaeton, Grime, Trap.

**Other traditions:** e.g. World music and Fusion, Music for media (Film, TV, or computer games), Western classical styles of music. Jazz and Blues.



## How is this course assessed?

The Music course is assessed through 3 Components set by the Exam Board:

- **Component 1:** Exploring Music Products and Styles coursework.
- **Component 2:** Music Skills Development coursework.
- **Component 3:** Responding to a Music Brief; this has written planning and review in formal supervision.

## What do you need to be successful on this course?

To succeed in Music, you'll need a positive attitude, a willingness to learn, and a commitment to developing your problem-solving skills. Here are some key qualities:

**Perseverance and resilience:** students must be able to perform their work and use feedback to improve their performing skills.

**Good performance skills:** students must be prepared to play in front of others and get involved in an ensemble.

**An interest in music software:** help students compose their musical pieces.

**Passion for music:** students who are interested in a wide variety of styles of music.

*For more information, please speak with Mrs Ross-Shaw.*

# BTEC Tech Award in Performing Arts



## What will you study?

This qualification is for learners interested in taking a hands-on course that provides an insight into what it is like to work in the performing arts sector.

You will develop core skills that are vital to a wide range of roles (from performing to designing and directing) across the creative industries, including film and television, theatre, games, and advertising. There will be an opportunity to study professionals' work and processes used, the skills and techniques used in different roles, and how to contribute to the creation of a performance in either a performance or non-performance role.

You will also have the opportunity to develop your own technical, practical and interpretative skills through workshops and classes whilst also developing transferable and employability skills such as responding to a brief, self-development, planning, time management and communication.

## What do you need to be successful on this course?

To succeed in BTEC Performing Arts, you'll need a positive attitude, a willingness to learn, strong teamwork and communication skills and a commitment to developing your problem-solving skills.

## How is this course assessed?

As a creative subject with a focus on application, there is no written exam. All components, including the externally assessed component, are assessed through set tasks which give you as much freedom as possible in how you respond. This means that you can work to your own strengths and interests and focus on the area of the performing arts sector that most interests you.

- **Component 1: Exploring the Performing Arts.** You will develop your understanding of the performing arts by examining the work of performing arts professionals and the processes used to create performance. *This is worth 30% of the overall qualification.*
- **Component 2: Developing Skills and Techniques in the Performing Arts.** You will develop your performing arts skills and techniques through the reproduction of acting, dance and/or musical theatre repertoire as performers or designers. *This is worth 30% of the overall qualification.*
- **Component 3: Responding to a Brief.** You will be given the opportunity to work as part of a group to contribute to a workshop performance as either a performer or a designer in response to a brief and stimulus. *This is worth 40% of overall qualification.*

**Strong work ethic:** Regular rehearsals both in and out of lesson time, completing homework and research to support your performance is crucial to being successful in Drama.

**Organisation skills:** The ability to organise your rehearsal time to ensure that your devised work is productive. Ensuring that you plan and organise tasks in your own time such as learning lines and completing research to ensure you are fully prepared for lessons.

**Ability to think creatively:** Exploring different performance styles and genres to develop your performance work will be a key part of the course. You need to show a willingness to try different ideas and combine these to improve your performance work.

**Perseverance:** Don't be discouraged by challenges. Working collaboratively with your peers and seeking help for your teachers will ensure you can succeed.

**Resilience:** Students must be able to perform their work in front of their peers, and use feedback to improve their performance skills.

*For more information, please speak with Mrs Baxter.*

# BTEC Tech Award in Sport



## What will you study?

The Tech Award in Sport covers many aspects of sport, health and fitness. Here are some of the key areas you'll explore:

**Component 1 Preparing Participants to Take Part in Sport and Physical Activity:** Learners will explore the different types and provision of sport and physical activity available for different types of participants, barriers to participation and ways to overcome these barriers to increase participation in sport and physical activity. They will also research equipment and technological advances in a chosen sport or physical activity and how to prepare our bodies for participation in sport and physical activity.

**Component 2: Taking Part and Improving Other Participants Sporting Performance:** Learners will investigate the components of fitness and their effect on performance, take part in practical sport, explore the role of officials in sport and learn to apply methods and sporting drills to improve other participants' sporting performance.

**Component 3: Developing Fitness to Improve Other Participants Performance in Sport and Physical Activity:** Learners will be introduced to and develop an understanding of the importance of fitness and the different types of fitness for performance in sport and physical activity. They will also develop an understanding of the body and fitness testing.

## How is this course assessed?

The Tech Award in Sport is assessed through three components.

- **Components 1 and 2** are assessed through coursework completed in class as written assignments, presentations, and practical scenarios. Both components are worth 30% of the final grade.
- **Component 3** is assessed through a written exam that takes place at the end of the course in Y11. The exam is worth 40% of the final grade.



## What do you need to be successful on this course?

To succeed in Sport, you'll need a positive attitude, a willingness to learn, and a commitment to developing your problem-solving skills. Here are some key qualities:

**Strong work ethic:** Regular practice and meeting coursework deadlines is crucial to being successful on the course.

**Good literacy skills:** The ability to write comprehensive pieces of writing is essential.

**Ability to plan, prepare and lead coaching sessions:** throughout the course you will be required to lead warm-ups and coaching sessions to others.

**Perseverance:** Don't be discouraged by challenges. Keep practicing and seek help when needed.

*For more information, please speak with Mr Lingard.*

# BTEC Tech Award in Travel & Tourism



## What will you study?

The Tech Award in Travel and Tourism is designed for students who are interested in pursuing a career in the travel and tourism/leisure sector. You'll study components ranging from travel and tourism organisations, destinations, customer needs and influences of global travel and tourism.



## How is this course assessed?

The Tech Award in Travel and Tourism is assessed through 2 coursework bases assignment and one exam.

**Assignment 1** – this is completed internally between February and April of Year 10 (marked by your teacher and checked by the exam board).

**Assignment 2** – this is completed internally between September and December of Year 11 (marked by your teacher and checked by the exam board).

**Examined unit** – this is assessed by a two-hour exam in the summer of Year 11. This tests your understanding of key Travel and Tourism concepts across a range of short, medium, and long written responses.

## What do you need to be successful on this course?

To succeed in Travel and Tourism, you'll need a curiosity about the world around you and an awareness of how important travel and tourism is to our world's economies, including our own. You don't need to be well travelled, but you should aspire to be in the future. **Here are some key qualities:**

**Strong work ethic and the ability to reflect on your work:** Your teachers will provide you with verbal feedback. It's important to recognise their expertise and improve your work in a timely fashion.

**Geographical knowledge:** Your understanding of human geography is especially important. You'll need a good foundational knowledge of how the world is connected and why this can be both a positive and negative when thinking about the travel and tourism industry.

**Good literacy and numeracy skills:** You will need a good level of written communication to achieve the highest standards in your assignment work. Numeracy skills are important in accessing some of the questions found in your examination.

**Computer skills:** Assignment work takes place on laptops, so computer skills are helpful to produce this work.

**Organisation:** There's a lot of knowledge to learn, but there are clever ways of organising this knowledge that we can teach you! Commit to organising yourself from the beginning.

We look forward to working with keen young people who are considering a career in the travel and tourism sector!

***For more information, please speak with Mrs Lindsay.***