

Post 16 Information Evening

Plans after GCSE

During the Autumn term in year 11 we start to talk to students about Post and future plans. This evening is to outline different options for your child and for them to start to talk about what they would like to do and discuss ideas with you over the summer holidays.



Speakers

Mrs Doherty- Deputy Headteacher

Mrs Ali- Assistant headteacher Post 16
Outcomes

Ms Swales- Director of Post 16:
Transition and Pastoral

Mr Dorr- Careers leader

New Build

- £4 million funding for a brand new sixth form provision
 - 6 classrooms
 - Study space
 - Social space
 - Dining facilities
- Work should re-start in the next month with a projected end date of February 2025



Why Immanuel college - Post 16?

- **Oversubscribed** Post 16
- **Outstanding** results at A Level
- **Highest ever** percentage predicted of top grades at A Level
- **Best ever** results at BTEC

OUTSTANDING OUTCOMES



What is Post 16?

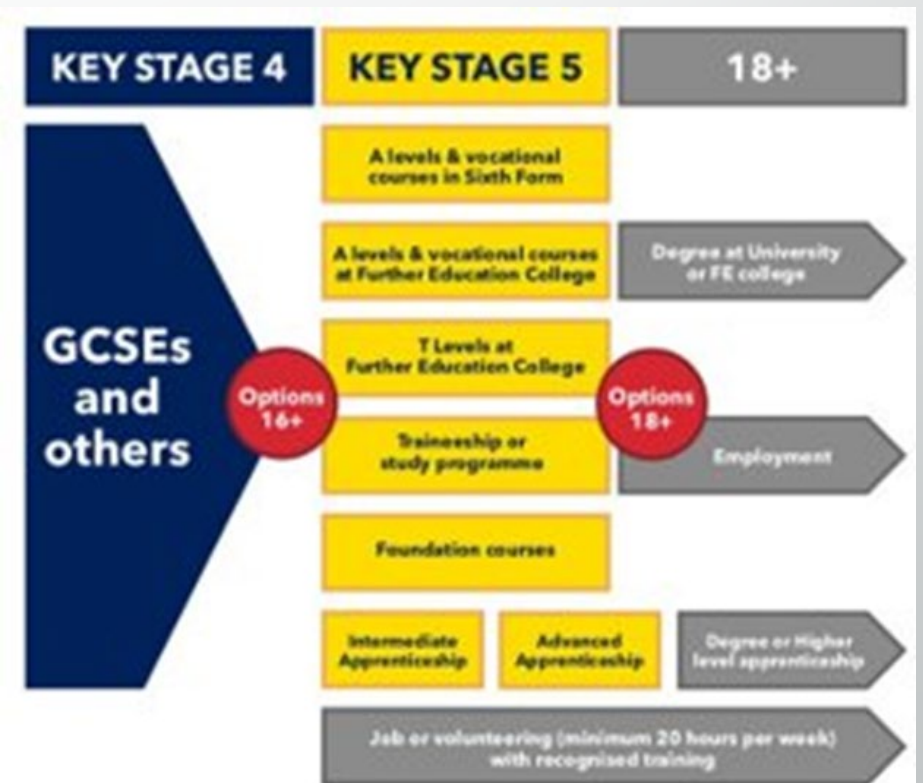
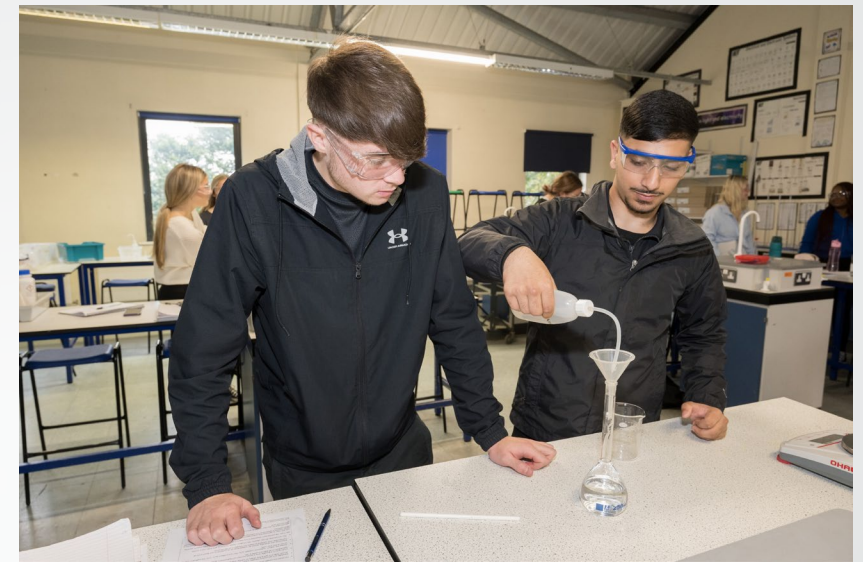
- You will officially leave school in June 2025;
- Following this you move into the Post-16 or Key Stage 5 phase of your education;
- At this stage you either move onto 'level 3' courses (e.g. A levels, level 3 BTECS, T Levels) or, in the minority of cases level 2 courses (the same level as GCSE);
- Up until the age of 18 you must be in education or training;
- Immanuel College's NEET (Not in Education, Employment or Training) figures are very low both locally and nationally (currently 1.3%).



Study Programme at Immanuel College..

Students generally move on to a Level 3 pathway and choose from the following:

- A Levels
- Other Level 3 qualifications e.g. BTECs
- A mixture of A Levels and Level 3 qualifications
 - 4 A levels
 - Leadership roles
- Enrichment, EPQs, Sports leadership
 - L2 pathway



Lucy Rhodes – Head Student

House in lower school - Bonhoeffer

GCSEs – 9,9,8,8,8,8,8,7,7,Dist*

After sixth form I want to study a joint honours in maths and philosophy.



Year 10 - didn't know what I wanted to do in year 10. Picked a range of subjects in year 12 to keep options open

Subjects – maths, english literature, philosophy and photography

Favourite thing about sixth form – being able to choose subjects that I actually wanted to do, that will also lead to university and future careers



Ben Wilkinson – Deputy head student

House in lower school – Bonhoeffer

GCSE's: 9,9,8,7,7,7,6,D*,D,

After sixth form I want to....

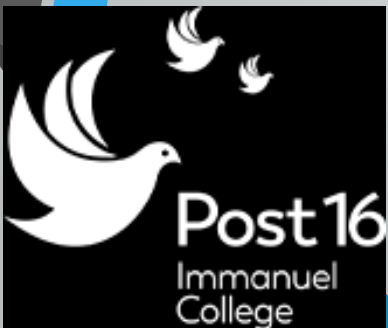
**Digital marketing apprenticeship,
Sports teacher.**



Year 10 – did not have a clue about what I wanted to do!

Subjects – History, English language and literature and sport

Favourite thing about sixth form – the free time but also knowing you have time at school to do all your homework if you use your frees and studies wisely,

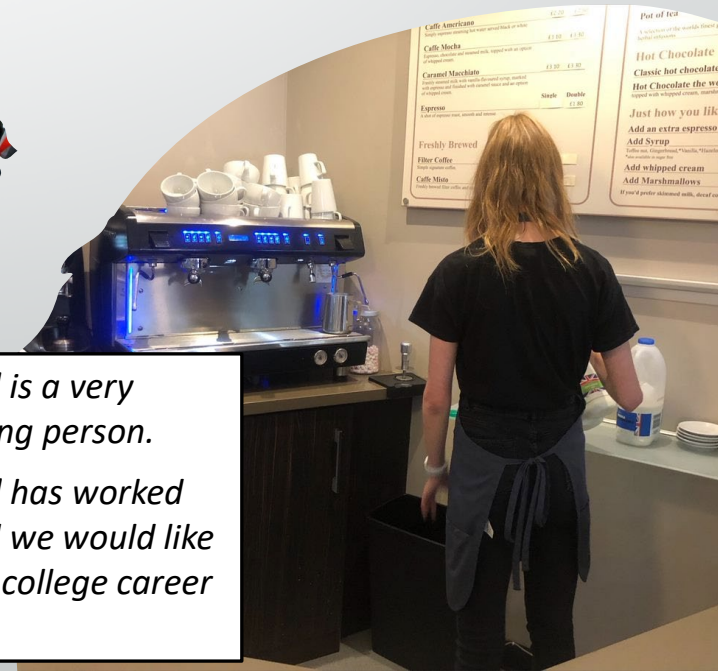


Careers Advice at Immanuel College

- Much is happening in Year 10 – work experience, employability sessions, site visits as part of Bradford Manufacturing Weeks;
- What else is to come in Year 11:
 - Careers interviews
 - Guest speakers in assemblies
 - Employability workshops
 - Careers in the PSALM curriculum (incl. the writing of curricula vitae)



"It quickly became apparent that [name] is a very bright, conscientious, and respectful young person. The feedback from everyone that [name] has worked with has been resoundingly positive, and we would like to wish her well for the remainder of her college career and into the future."





The role of the Careers Adviser

- Our careers adviser, Deborah Lister, is in school every Wednesday and alternate Fridays;
- Deborah is based in the library;
- There is a statutory obligation for students to have at least 2 careers interviews over the course of their secondary school career - these should happen at key decision making points;
- All Year 11 students will receive a one-to-one careers interview – we commence with our SEND, LAC, AP;
- The prioritising of these interviews is also informed by form tutors and student conversations with the Post 16 team;
- Impartiality is at the heart of these interviews. Deborah will:
 - Help students explore the best pathway for them
 - Establish a primary and 'back up' destination
 - Facilitate career exploration
 - Support with applications
 - Give independent advice and information
- Ongoing support available for leavers until Autumn 2024/2025
- What else can you do?
 - Discuss careers at home
 - Encourage your child to sign up to careers events

UniConnect (Go Higher)

- The aim of the GoHigher programme is to help 'first generation' students to realise their potential and support them in reaching university or a higher-level apprenticeship;
- This support carries on into Post 16;
- Uniconnect is changing over the next year. As a college we will update you on the new offer but its focus will remain on the raising of attainment and aspirations, as well as engaging with specific groups of learners;
- This work will be coordinated between the careers lead and a Uniconnect Outreach Officer.



What are the options?

If you know what job you would like to do this could influence the route and courses you choose

Useful careers websites

- National Careers Service job profiles <https://nationalcareers.service.gov.uk/explore-careers>
- Prospects – job profiles <https://www.prospects.ac.uk/job-profiles>

E.g. how to become a pilot, subjects needed to study medicine etc.

Where to study - Academic and Vocational Courses

Local Colleges

New College Bradford
Bradford College
Shipley College
Keighley College
Leeds City College
Craven College

6th Forms

Immanuel College
Hanson Academy
Dixons 6th Form
Greenhead College
Notre Dame

T Levels (Level 3)

Relatively new qualification, offered by local colleges

Courses available in: health, business, digital & education & childcare

T-levels are two-year courses, which are equivalent to three A-levels

Your time is split: 80% classroom learning; 20% industry placement

T-levels focus on vocational skills

Assessed by exams and skills assessments

Vocational courses (Levels 1 to 3)

Mainly offered at further education colleges, like Bradford College and Shipley College

Allow you to get experience and qualifications for a whole range of jobs and careers.

Hair & beauty

Catering

Motor vehicle

Electrical installation

Animal care

Welding

Plumbing

Joinery

Travel & tourism

Engineering

Bricklaying


Sports & fitness



Apprenticeships

An apprenticeship includes:

- paid employment with holiday leave
- hands-on-experience in a sector/role of interest
- at least 20% off-the-job training
- formal assessment which leads to a nationally recognised qualification
- National apprenticeship vacancy listings <https://www.gov.uk/apply-apprenticeship>



Choosing your subjects – A-level or BTEC

- Entry requirements:
 - Points
 - Subjects
 - Modules
- Contact university Admission teams if you are unsure of any specific requirements.
- Let's look at some examples...



Examples – Science courses

- Will accept BTEC Applied Science but will ask for specific modules to be studied and sometimes only if combined with a specific science A-level (E.g. Optometry).
- Will require at least 1 science A-level (Maths, Chemistry, Biology or Physics - Sometimes Psychology is counted but always check to be sure).



Examples – Healthcare courses

- Very specific to each course and qualifications being studied.
- **For example:**
 - Nursing requires no specific subjects.
 - Midwifery requires no specific A-level or a health or science BTEC.
 - Paramedic Science requires 1 x Science A-level or a health or science BTEC.
 - Physiotherapy requires 1 x Science or Sport A-level or a health, science or sport BTEC.



Most of these courses will accept any subjects studied and will not require a specific Level 3 qualification to have been studied.



Can be beneficial to have studied a related subject at level 3 but not essential.

Examples –
Management,
Law and Social
Sciences

Choosing your 6th Form subjects – How to research?



University websites



Go to Open Days at
Universities



Look at the entry
requirements for Level 3
(e.g. BTEC) and Level 2
(e.g. GCSE) qualifications



Don't presume your
subjects will get you onto
the course



Contact Admissions teams
or school staff if you are
unsure



Think about what subject
combination could help
you get the highest
number of UCAS points

UCAS Points

UCAS TARIFF POINTS	GCE AND VCE		T level	BTEC QUALIFICATION (QCF)	
	A level & AVCE	AS level & AS VCE		Extended Diploma	Diploma
168			D*	D*D*D*	
160				D*D*D	
152				D*DD	
144			D	DDD	
136					
128				DDM	
120			M		
112				DMM	D*D*
104					D*D
96			P (C or above on the core)	MMM	DD
88					
80				MMP	DM
72			P (D or E above on the core)		
64				MPP	MM
56	A*				
48	A			PPP	MP
40	B				
32	C				PP
28					
24	D				
20		A			
16	E	B			
12		C			
10		D			
8					
6		E			
4					

Immanuel Alumni - Isha

Completed Sixth Form in 2020.

Isha is currently in her 3rd year of Diagnostic Radiography.

Isha studied these qualifications:

-BTEC Applied Law

-BTEC Health and Social Care

-BTEC Applied Science

Immanuel Alumni - Maisie

*"During sixth form I studied **BTEC Health and Social Care, BTEC Applied Science and BTEC Public Services.***

When applying for university I needed to have a 112 UCAS points in order to enrol. Each grade equals to a certain amount of UCAS points and the higher grade you receive the more points you will have. Some of the information I received during these subjects I use now in my degree and lectures which has given me a head start and a basic understanding of the topics."

Immanuel
Alumni -
Joseph

Currently studying 2nd Year of LLB Law.

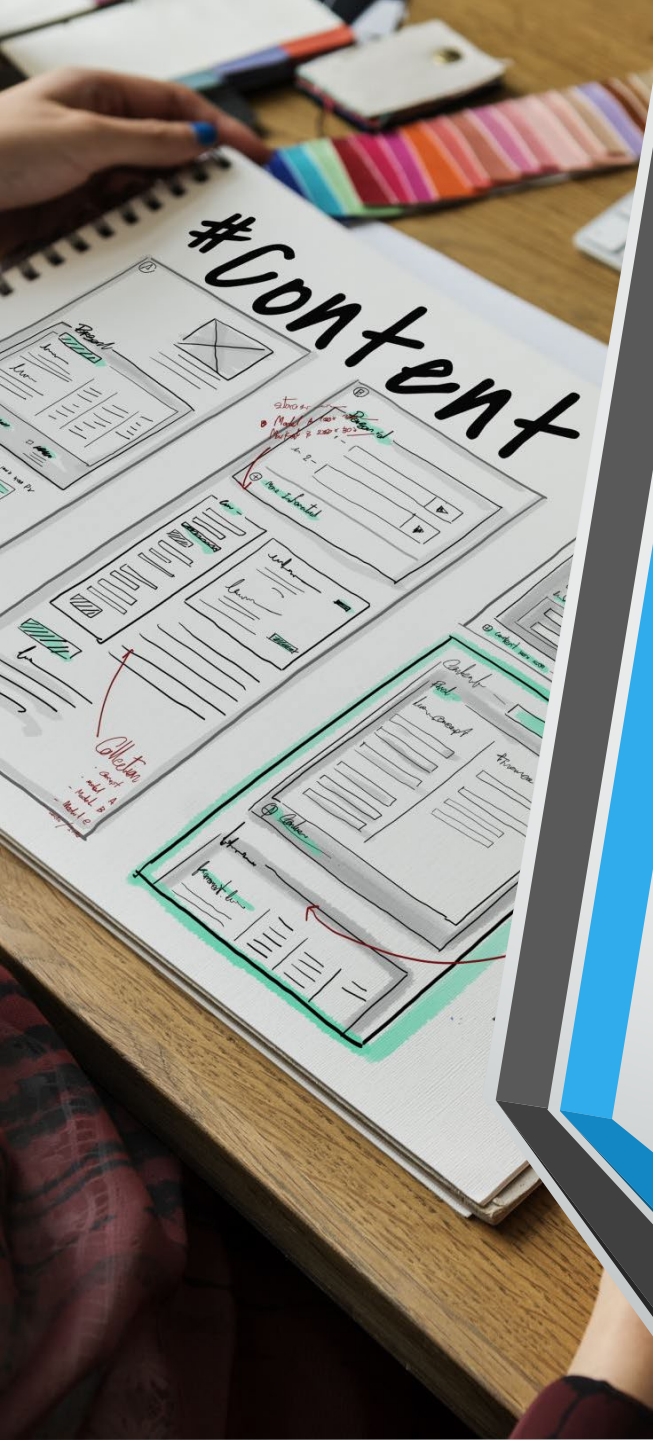
Joseph studied these qualifications:

- BTEC in Applied Law

- A-level in English Language

- WJEC in Criminology

- BTEC Certificate in Travel and Tourism



Next steps at home

- Visit ucas.com
- Visit universities
- Gov.com
- College open events
- Apply online

Next steps in-school:

- Post 16 Open evening on Thursday 14th November – a date for your diary!
- Post 16 assembly for all Year 11 student's w/c 4th November
- 1 to 1 meeting with each year 11 student in December
 - Summer term- Transition meeting
 - August results
 - September enrolment

Conclusion

- There are a vast range of options and courses available
- Start planning now, to ensure you make an appropriate and informed choice for Post-16
- School staff, family and friends, will all be able to give insights into different courses and jobs and how well you might be suited to them
- Use websites, online resources and your careers adviser to ensure you have all the information you need
- Pick courses and options that will suit your strengths and interests

Contact details

- Huma Ali- Assistant headteacher Post 16 Outcomes
- Alan Dorr- Careers Leader
- Helen Connor - Assistant Head of Post 16
- Charis Stockill - Pastoral Manager
- Website : www.skillshouse.co.uk