



Post-16  
Immanuel  
College

# Prospectus 2024-2025

[www.immanuelcollege.org/post-16](http://www.immanuelcollege.org/post-16)



# Contents

<b>Welcome</b>	<b>3</b>	<b>IT (Applied General)</b>	<b>28</b>
<b>How to Apply</b>	<b>4</b>	<b>Law (A Level)</b>	<b>29</b>
<b>Socials</b>	<b>4</b>	<b>Law (Applied General)</b>	<b>30</b>
<b>Why Choose Immanuel</b>	<b>5</b>	<b>Maths (A Level)</b>	<b>31</b>
<b>Trips &amp; Opportunities</b>	<b>6</b>	<b>Media Studies (A Level)</b>	<b>32</b>
<b>Charity Work</b>	<b>8</b>	<b>Music (A Level)</b>	<b>33</b>
<b>Facilities &amp; New Build</b>	<b>9</b>	<b>Music (Applied General)</b>	<b>34</b>
<b>Student Progression</b>	<b>10</b>	<b>National Extended Certificate in Uniformed Protective Services (Applied General)</b>	<b>35</b>
<b>Support Team</b>	<b>11</b>	<b>Performing Arts (Applied General)</b>	<b>36</b>
<b>Progression Module &amp; Dress Code</b>	<b>12</b>	<b>Philosophy, Theology, Ethics - Religious Studies (A Level)</b>	<b>37</b>
<b>FAQs</b>	<b>13</b>	<b>Photography (A Level)</b>	<b>38</b>
<b>Applied Science (Applied General)</b>	<b>14</b>	<b>Physics (A Level)</b>	<b>39</b>
<b>Art (A Level)</b>	<b>15</b>	<b>Psychology (A Level)</b>	<b>40</b>
<b>Biology (A Level)</b>	<b>16</b>	<b>Sociology (A Level)</b>	<b>41</b>
<b>Chemistry (A Level)</b>	<b>17</b>	<b>Spanish (A Level)</b>	<b>42</b>
<b>Criminology (Applied General)</b>	<b>18</b>	<b>Sport (Applied General)</b>	<b>43</b>
<b>Drama &amp; Theatre (A Level)</b>	<b>19</b>	<b>Technical Business (Level 3 - Extended Certificate)</b>	<b>44</b>
<b>English Language &amp; Literature (A Level)</b>	<b>20</b>	<b>Travel &amp; Tourism (Applied General)</b>	<b>45</b>
<b>English Literature (A Level)</b>	<b>21</b>	<b>Level 2 Certificate in Leadership Through Sport</b>	<b>46</b>
<b>Film Studies (A Level)</b>	<b>22</b>	<b>Level 2 First Award in Public Services</b>	<b>47</b>
<b>French (A Level)</b>	<b>23</b>	<b>Level 2 Hospitality</b>	<b>48</b>
<b>Further Maths (A Level)</b>	<b>24</b>	<b>Employability (NCFE)</b>	<b>49</b>
<b>Geography (A Level)</b>	<b>25</b>	<b>Maths &amp; English GCSE Resit</b>	<b>50</b>
<b>Health &amp; Social Care (Applied General)</b>	<b>26</b>	<b>Our Christian Vision</b>	<b>51</b>
<b>History (A Level)</b>	<b>27</b>		



# Welcome to Immanuel College Post-16

## Dear Student,

You are at the stage in your education when you have to make some very difficult decisions. What subjects should you study Post-16? Should you stay in school or look elsewhere? The decisions that you make over the coming weeks and months are potentially life-changing and will certainly affect what you end up doing when you are 18 and older.

Here at Immanuel, we are incredibly proud of our outstanding Post-16 provision. We are fully inclusive, with courses on offer to suit all interests and abilities. Our enviable examination results for A levels and BTECs are consistently well above the national and local average. If you become a Post-16 student at Immanuel you will benefit



from the highest quality of teaching, individual pastoral support, state-of-the-art facilities and a multitude of fantastic leadership and enrichment opportunities. You will also receive expert guidance in careers and higher education, and we will provide full support throughout the UCAS process for those students who wish to apply to University.

Please read this prospectus carefully, within which you will find details of what all our courses have to offer. Also, do take time to visit the Post-16 website, where you will discover more information and be able to access our online application form.

I am delighted that you are considering Immanuel Post-16 and I wish you every success in making the right decision!

**Mr S Mulligan, Headteacher**

---

## Thank you for your interest in Immanuel College.



Immanuel prides itself on being a welcoming, hardworking, lively and caring environment for our students to learn and develop. The Headteacher and staff are totally committed to the provision of a first class allround education for all our students. We firmly believe that every child is special and must be treated as such, as a Church of England School our Christian ethos underpins all that we do.

We uphold the Christian values and teach our students about consideration of others, respect and responsibility.

There is a highly productive relationship between the Governors, Headteacher and staff. As Governors we support and challenge the work of the school to ensure high standards and as a team we do not rest on our laurels, but are always seeking ways to build on our successes, to improve and continually develop.

This prospectus gives you a flavour of the school, which we hope you will find useful, and we warmly invite you to visit and see our Post-16 in action.

**Mrs D Sterling, the Chair of Governors**

# How to apply

Whether you're an existing student or are hoping to join us in Year 12 from a different school, you need to apply online via our website at [immanuelcollege.org/post-16/admissions/](https://immanuelcollege.org/post-16/admissions/)

Once we have received your application, one of our Post-16 team will be in touch to invite you in for an interview and a tour of the school.



Scan here and apply today!



## Socials

Follow our social accounts:

**f** [ImmanuelCollegeBDAT](#)

**@** [@ImmanuelPost16](#)

**X** [ImmanuelBD10](#)

**in** Immanuel College, Bradford





# Why Choose Immanuel College?

Immanuel College provides a comprehensive education for our learners to suit all pathways and individual career choices. Our students achieve outstanding outcomes year on year. All performance measures are significantly above national average and we consistently record a very high number of A\*/A grades at A Level each year.

Our welcoming atmosphere, caring Christian ethos, supportive pastoral team, modern facilities and outstanding results makes Immanuel College a fantastic place to learn.

Our Christian values of Perseverance, Character and Hope run through our pastoral and enrichment programme.

Reading our success stories which will highlight the amount of support our students feel in our Post-16. We provide individualised support through tutor time and our dedicated Post-16 team and student mentor.

- 1 Outstanding results
- 2 State of the art new build
- 3 Student leadership opportunities
- 4 Established links to Cambridge, Oxford and Russell Group universities
- 5 Inclusive community
- 6 Fantastic experienced support team
- 7 Remarkable specialist teachers
- 8 Inspirational speakers from industries, HE+ and mental well-being charities
- 9 Amazing life experiences, visiting countries such as; Thailand, Vietnam, Brazil, New York, Paris, Barcelona and Santiago
- 10 Stay Local, Go Further

# Trips and Opportunities

In Post-16 we provide opportunities to expand horizons and have new life experiences across the world.

- 1 Malham, England
- 2 Robin Hoods Bay, England
- 3 Oxford and Cambridge, England
- 4 Paris, France
- 5 Santiago De Compostela Pilgrimage, Spain
- 6 Auschwitz, Poland (2022)
- 7 Vietnam (2023)
- 8 Thailand (2024)
- 9 Rio, Brazil (planned for 2025)





6

8

7



# Charity Work

We are passionate about our students becoming valuable members of society and as such continue our message that we are All God's Children and should show kindness to all. We reach out to our local community as well as national charities, here are a few highlights from the year:

▶ We have partnered with the National Literacy Trust for several years now. This involves a reading programme with a local primary school and a highlight for Post-16 students is the Christmas book wrapping event. Every Post-16 student has the opportunity to wrap a book for those in need in Bradford.

▶ 1 in 2 people are effected by cancer in their lifetime so we wanted to raise awareness and support to two fantastic charities;

- ▶ MacMillan in their annual Coffee Morning fundraiser. This involved a bake off with over 30 entries from Post-16 students.
- ▶ Breast Cancer Now with their 'wear it pink day,' Post-16 students and staff got to dress up in pink for the day.





# Facilities

## Post-16 Facilities

Our Post-16 students have their own facilities in addition to the provision available to all Immanuel students.

### Mezzanine

The Mezzanine provides a social area and catering facilities for Post-16 students, which is also enjoyed by staff and visitors and is open between 8.45am and 2.30pm daily.

### Work Room

The Post-16 work room, which is staffed by our pastoral manager, provides a flexible space for quiet independent work, mentoring meetings and use of our dedicated Post-16 IT provision.

### Silent Study

The Post-16 silent study room provides a large silent space for revision and use of additional Post-16 IT facilities.

**We trust you to take pride in your areas and make them your own.**

## New Build

As part of the new expansion approved by the Department for Education and following a competitive funding application, Immanuel College has secured £4 million to create a new building to house the expanded sixth form. The new, state-of-the-art extension will comprise six new classrooms, social study space, a common room and a dining room complete with catering facilities.

The new school building will also be environmentally sustainable and more energy efficient to cut carbon emissions and the rising cost of bills.

Building work is due for completion in the Spring of 2025.



## Sports & Exercise

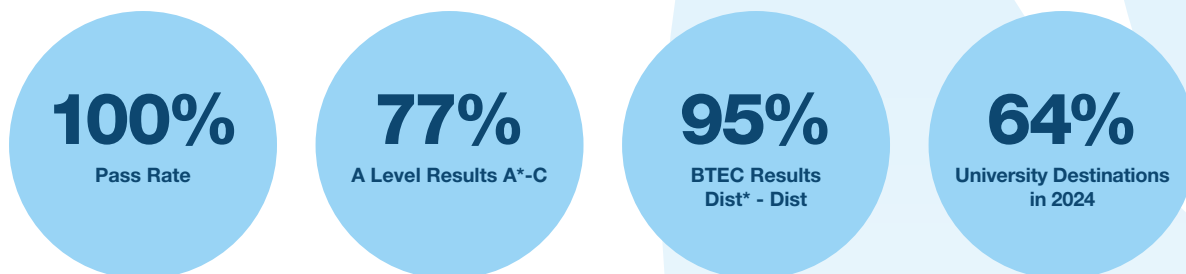
The sports facilities have been significantly improved to include a new sports hall that can be used for badminton, indoor football, netball, basketball, cricket, volleyball, table tennis, gymnastics and trampolining.

Furthermore, students have access to our impressive outdoor space and facilities that include a multi games area and field space with numerous pitches and training grids.



# Results & Student Progression

Immanuel College's Post-16 prepares our students to take the next step by helping them to achieve the best grades possible. Despite the challenges caused by the pandemic, this Summer we celebrated an impressive set of A Level and BTEC results.



## University

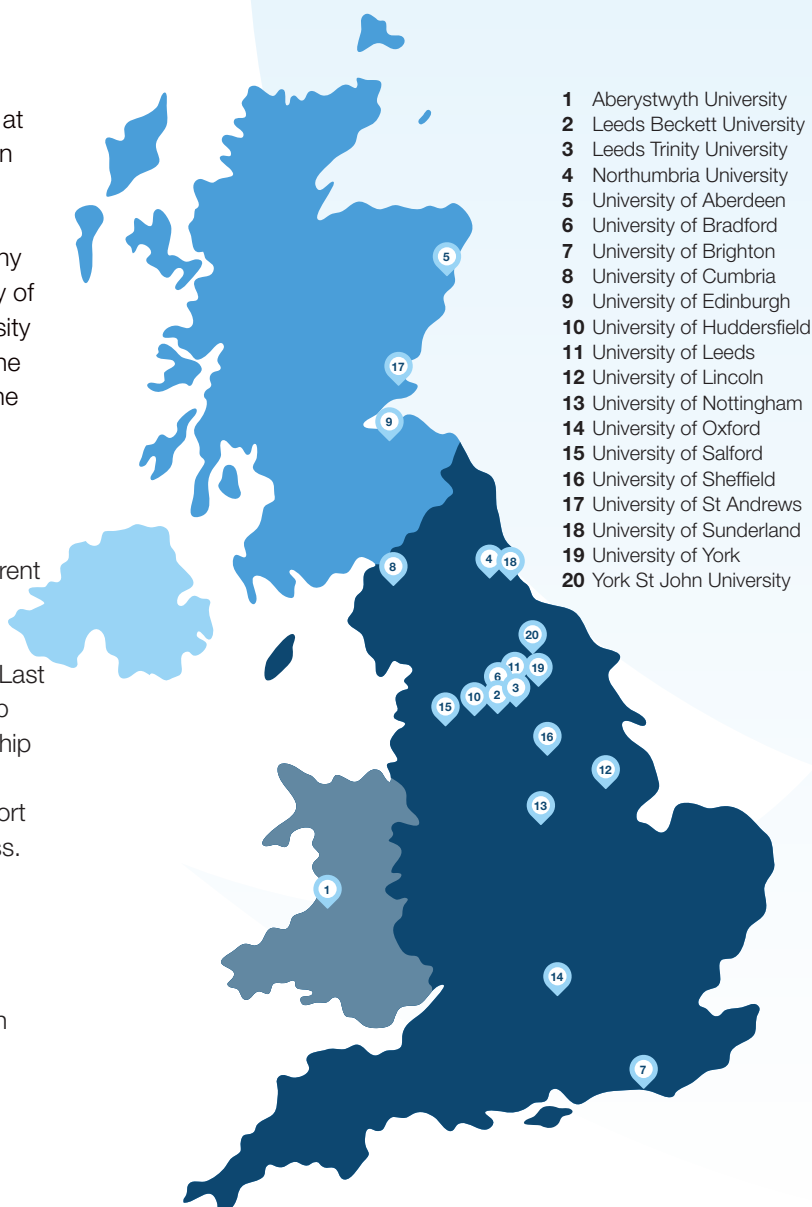
Last year our students gained places at some of the UK's top higher education providers, including 3 students at the University of Oxford to study Mathematics and Statistics, Philosophy and Theology, and Law, the University of York to study Criminology, the University of St Andrews to study History, and the University of Huddersfield to study Fine Art.

## Apprenticeships

Post-16 can prepare the way for different pathways such as Apprenticeships with some of our students securing impressive Apprenticeship schemes. Last year included a degree apprenticeship in Quantity Surveying, an apprenticeship with Mercedes, and an NHS apprenticeship as a Healthcare Support Worker with many more in the process.

## Full time employment

We also prepare our students to go straight into full-time employment with some of our students going on to working in marketing and sales and on to work for companies such as Northern Power Gas and JCT600.



# Meet the Post-16 Team



## Form Tutors

You will be assigned a form tutor who you will meet on a regular basis and who will be there for you to provide further support.

We are all looking forward to meeting you and working with you during your time in the sixth form! We will monitor your academic progress closely and we are always there to provide any advice, guidance or pastoral support that you might need.

Pictured left to right below:

- Mrs V Sutcliffe** - Post-16 Administrator
- Miss C Reid** - Head of Year 12 & 13
- Mrs H Ali** - Assistant Headteacher  
Post-16 Outcomes and Quality of Education
- Mrs C Stockill** - Post-16 Pastoral Manager
- Mrs H Connor** - Assistant Head of Year 12 & 13

## Careers and University Guidance

In addition to the Post-16 team, you will also benefit from expert and independent careers guidance provided through our external consultant. She will give you personalised advice to help you make the best decisions about your future, whether that is in education, employment or training.

Most students in year 13 will progress to University and, starting at the end of year 12, you will be guided through every stage of the UCAS application process.

We are  
here to  
support  
you



# Progression Module

The Progression Module helps Year 12 and Level 3 students to make an informed decision about what course or career path to take.

The module develops skills in critical thinking, research, evaluation, interview skills and presentations. The Progression Module is currently studied in over 25 schools and colleges making it one of the largest schemes of its kind.

This qualification provides 12 UCAS points for the following local universities: University of Huddersfield, Leeds Beckett University and Leeds Trinity University. It is also suitable for students who wish to attend higher education, apprenticeships and employment.

## EPQ (Extended Project Qualification)

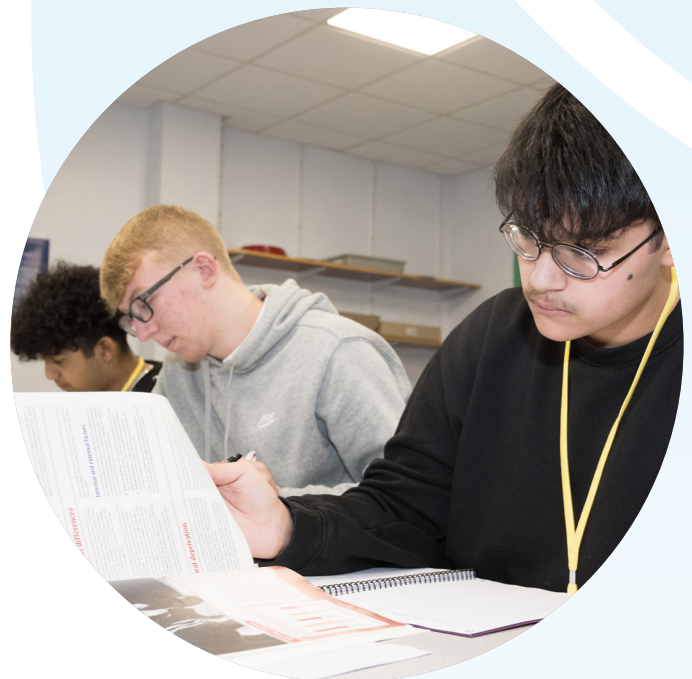
Suitable for students studying A Levels and planning to attend competitive Universities and/ or competitive courses. E.g. medicine, dentistry, veterinary, marine biology, computer science etc. GCSE grades 8 and 9's.

EPQ is an independent research project which involves writing an essay of 5000 words. The third component of the project is an oral presentation. It's worth the same UCAS points as an AS level with an A\* grade available.

## Work Experience

Are you interested in a vocational course such as nursing, midwifery, medicine, teaching, physiotherapy, occupational therapy, sports coaching? It's valuable to have experience for university/ job applications.

You can arrange your own work experience with the support of our work experience co-ordinator in school.



---

# Our Dress Code

We want to prepare our students for life after school and as such offer a casual "office" dress code. Our Post-16 students are ambassadors for the rest of the school cohort, therefore, we want them to take pride in their appearance.

We would recommend students wearing the following items of clothing:

- ▶ Shirt and tie with smart trousers
- ▶ Shirts and chinos
- ▶ Trousers and top
- ▶ Smart skirt - Skirts/dresses must be closer to the knee than the hip
- ▶ Leggings can be worn under skirts/dresses

# FAQs



## How to choose and how many subjects?

There is a timetable available allowing students to choose the subjects they want to do. We encourage students to take 4 subjects in the first instance and then after the initial 4 weeks settling in period they can reduce these down to 3 subjects which they will study for the rest of their time in Post-16.

## Is it possible to change subjects?

We have a 4-week settling-in period which allows you to understand the subject content. There is a preliminary assessment after the four weeks and if you are struggling with the subjects, then you have the opportunity to speak to staff, get some support and even amend your subject choice.

## How can you use your free periods

Students are expected to stay in school and work full time ONLY for the first half term. This allows our students to embed good study habits and allows them to use their free time effectively. After this settling-in period, many students can work from home or off-site when they do not have any lessons in school.

## What is the application process?

Application forms are available via our website and are completed electronically; information and QR code can be found at the front and back of the prospectus.

After applying you will be contacted regarding an interview. If successful, and after results day, you will have an enrolment interview in September to confirm which subjects you would like to study.

## Is it ok to have a part-time job?

A lot of our students have part-time jobs, we encourage this as this allows our students to have more independence. However, you must make sure the job doesn't interfere with your studies.

**Please contact us with any further questions.**

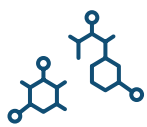
## How will parents know how their child is doing?

We hold an information evening for all parents to attend in the second week of the academic year. This evening gives parents the opportunity to meet the Post-16 team and be updated on what to expect throughout the year. There are also assessment points throughout the year when parents are sent data home informing them of the progress their child is making. If, at any point, we feel that we are worried about the progress of any student then a meeting is arranged with the students and follow-up with parents. Parents are encouraged to contact the Post-16 team at any time.

## What if you find Post-16 difficult?

We ensure that we find the perfect pathway for all our students. The subjects which are chosen are personalised to each and every student. If you struggle there are always staff on hand to advise and support you. Personalised intervention plans are put in place to match your needs and plenty of one-to-one help from subject specific teachers and the pastoral team is always available.





# Applied Science

## (Applied General)

### Why choose this subject?

---

No matter what career you are considering, the BTEC National Diploma in Applied Science will open the door to a world of potential.

Studying Applied Science will allow you to gain an insight into the scientific processes and principles that guide modern developments within the scientific field. Students will develop the analytical, research and experimental skills to extend their understanding of science and prepare them for further study in a scientific discipline.

Students will undertake numerous scientific investigations, interpreting their results and applying scientific concepts to everyday life. Students then have the opportunity to take on the role of a scientist, critically analysing their experimental conclusions and comparing to current scientific research. Alongside developing these skills, students will advance their understanding of human health and disease, chemical analysis and communications using waves.

### What will you study?

#### Year 12

- ▶ Principles and Applications of Science
- ▶ Practical Scientific Procedures and Techniques.

#### Year 13

- ▶ Science Investigation Skills
- ▶ Biological Molecules and Metabolic Pathways.

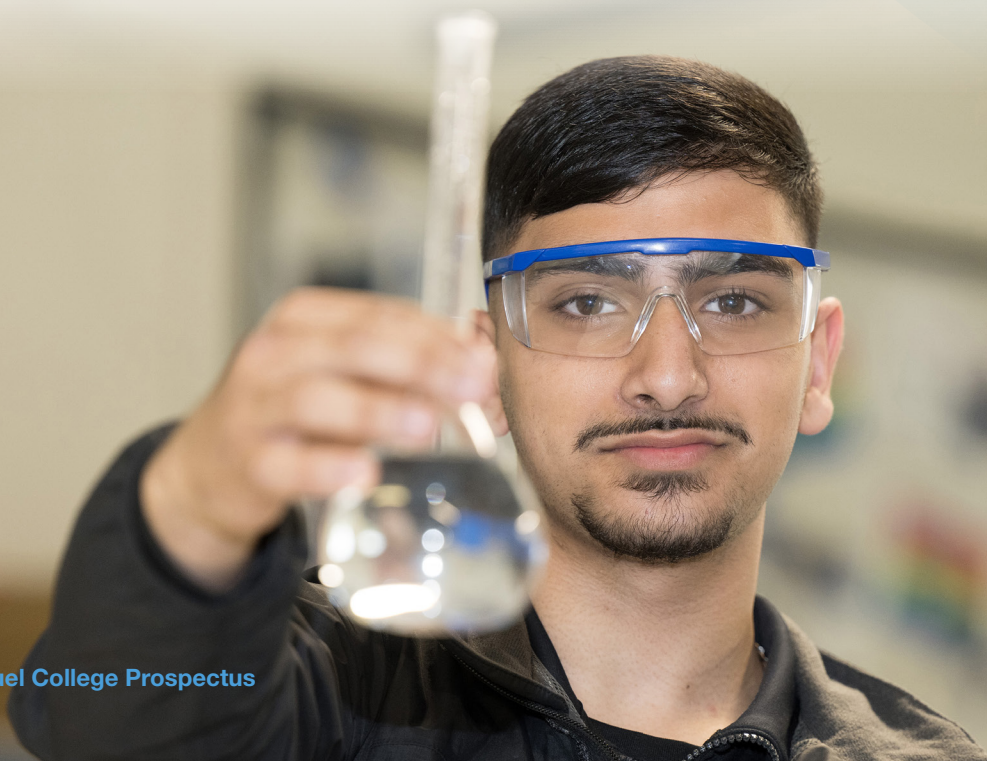
### How is this course assessed?

Throughout this course assessments will be conducted based on coursework and an examination will take place at the end of Year 13.

### What next?

---

Studying Applied Science provides a gateway to many university courses related to science, forensics, healthcare, sport science, nursing, physiotherapy, radiography and medical science. Throughout the course, students will develop analytical, problem-solving and communication skills; these transferable skills are highly desirable and set students up for success in the world of work or further education.





# Art (A Level)



## Why choose this subject?

**Want to develop your skills as an artist?**

**Want to work in a wide range of different styles and media?**

**Want to explore the work of others and how art has developed through time?**

**Keen to express yourself through art and think 'outside the box'?**

Willing to work hard, even in your own time, and show determination and independence?

Students will be introduced to a variety of experiences that explore a range of art media, processes and techniques. Students will explore the use of drawing for different purposes, using a variety of methods and media on a variety of scales. Students will use sketchbooks to support their work and will explore relevant images, artefacts and resources relating to a range of art, craft and design, from the past and from recent times.

## What will you study?

### Year 12

- ▶ Foundation skills
- ▶ Artist/Project research
- ▶ Personal Project introduction

### Year 13

- ▶ Personal project
- ▶ Externally set assignment.

## How is this course assessed?

The assessment for this course comprises externally set assignments and a synoptic assessment for each component of the A Level. Each component aims to stretch and challenge your abilities and skills to enable you to further develop your portfolio.

## What next?

An A Level in Art can lead you to university courses and employment in a wide range of careers including graphics, illustration, freelance work, teaching, the media and research. It will develop a wide range of skills such as independent thought, problem solving, attention to detail, research, communication, team work etc. making it an ideal choice to bridge science and humanities subjects.



# **Biology** (A Level)

## Why choose this subject?

---

An A Level in Biology develops the knowledge and skills you gained at GCSE. It will give you the skills to make connections and associations with all living things around you. Biology literally means the study of life and if that's not important, what is? Being such a broad subject, you will study many fascinating topics, plus it opens the door to a fantastic range of interesting careers.

## What will you study?

### Year 12

- ▶ Biological Molecules
- ▶ Cells
- ▶ Organisms exchanging substances with their environment
- ▶ Genetic information, variations and relationships between organisms

### Year 13

- ▶ Energy transfers in and between organisms
- ▶ Organisms responding to changes in their internal and external environments
- ▶ Genetics, populations, evolution and ecosystems
- ▶ The control of gene expression.

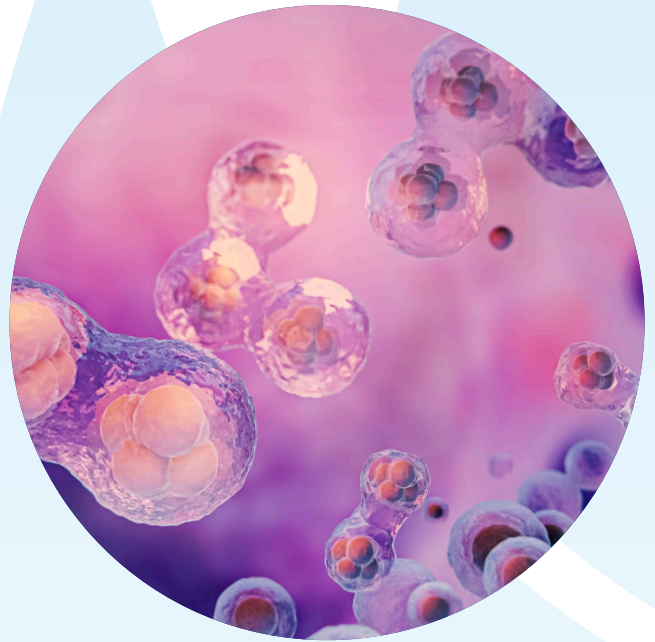
## How is this course assessed?

There is no coursework on this course, however, your performance during practicals will be assessed. There are three exams at the end of the two years for the A Level, all of which are two hours long.

## What next?

---

An A Level in Biology is highly regarded by employers when considering all lines of work. Further study at University could include Biology, Psychology, Sport and Exercise Science, Medicine, Anatomy, Physiology and Pathology Pharmacology or Toxicology and Pharmacy.







# Chemistry

## (A Level)



### Why choose this subject?

---

An A Level in Chemistry will answer the big question 'what is the world made of?' and it's the search for this answer that makes this subject so fascinating. From investigating how one substance can be changed into another, to researching a new wonder drug to save millions of lives, the opportunities that chemistry provides are endless.

### What will you study?

#### Year 12

- ▶ **Physical Chemistry** – including atomic structure, amount of substance, bonding, energetics, kinetics, chemical equilibrium and Le Chatelier's principle.
- ▶ **Inorganic Chemistry** – including periodicity, alkaline earth metals, the halogens.
- ▶ **Organic Chemistry** – including an introduction to organic chemistry, alkanes, halogen alkanes, alkenes, alcohols, organic analysis.

#### Year 13

- ▶ **Physical Chemistry** – including thermodynamics, rate equations, the equilibrium constant, electrode potentials and electrochemical cells.
- ▶ **Inorganic Chemistry** – Including properties of Period 3 elements and their oxides, transition metals, reactions of ions in aqueous solution.
- ▶ **Organic Chemistry** – including optical isomerism, aldehydes and ketones, carboxylic acids and derivatives.

### How is this course assessed?

There is no coursework on this course, however, your performance during practicals will be assessed. There are three exams at the end of the two years for the A Level, all of which are two hours long.

### What next?

---

An A Level in Chemistry is highly regarded by employers. Further study at University could include Chemistry, Biology, Pre-clinical Medicine, Mathematics and Pharmacology.





# Criminology

## (Applied General)

### Why choose this subject?

---

How can we seek to understand why people commit crimes? Throughout the two-year course, students will investigate the reason why people commit crimes and how we can try to reduce the crime rate. Students will look at individual cases as part of the course and take a trip to the Law Courts for observation.

### Some of the questions we will ask...

- ▶ How do we decide what behaviour is criminal?
- ▶ What is the difference between criminal behaviour and deviance?
- ▶ How do we explain why people commit crime?
- ▶ What makes someone a serial killer, or abusive to their own families?
- ▶ What are the roles of personnel involved when a crime is detected?
- ▶ What investigative techniques are available to investigators to help identify the culprit?

### Bobby Kristovic



#### Subjects Studied:

Criminology,  
Psychology, Maths.

#### Current Position:

University of Liverpool,  
Criminology BA (Hons).



#### Why is Immanuel a good place to study:

Immanuel College is a great place to study for a wide range of students. The support offered at Immanuel College is second to none with pastoral support from post 16 staff and passionate teachers available to help where it is needed. Resources like textbooks, laptops, and printers are freely available to students along with a range of study environments to suit anyone's study style. Studying at Immanuel College will provide you with the opportunity to move onto a successful career either directly or through means of further education at top universities or high-level apprenticeships.



### What will you study?

#### Year 12

- ▶ Changing Awareness of Crime
- ▶ Criminological Theories.

#### Year 13

- ▶ Crime Scene to Courtroom
- ▶ Crime & Punishment.

### How is this course assessed?

Assessment for this course typically takes place through internally marked controlled assessments and external examinations. The final grade is an aggregate of all the unit grades to give an overall grade of A\*-E.

### What next?

---

The Criminology course offers a specialist qualification that focuses on particular aspects of employment within the appropriate vocational sector. Students who take this course can then go on to seeking employment in any of the public services where they will have an insight into the Criminal Justice System. Students can also apply to university and continue studying Criminology.





# Drama and Theatre

## (A Level)



### Why choose this subject?

An A-Level in Drama and Theatre introduces the study of plays, practitioners, performance and design skills. You will devise original performance pieces and perform play texts in front of visiting audiences and you will develop an understanding of the background of these texts, to help you to understand the social, cultural and historical context. If you enjoy devising, performing or designing within the theatre then this course could be for you! Students with a clear passion, enthusiasm and determination to challenge themselves are welcome! You will also develop and improve life skills such as resilience, creativity, collaboration, empathy, problem solving and independence

### What will you study?

**Component 1:** You will devise and create an original performance piece. You will use one key extract from an existing performance text and a theatre practitioner as stimuli. You can be assessed as either performer or a designer within this component.

**Component 2:** You will work as part of a group to bring one key extract from a performance text to life. You can be assessed within this extract as either a performer or a designer. You will also be required to perform or design monologue or duologue from one key extract from a different performance text.

**Component 3:** Written examination which includes a live theatre evaluation. You will visit the theatre and discuss your experience of a live production as an audience member. You will complete practical exploration and study of a complete performance text – focusing on how this can be realised for performance. You will complete practical exploration and interpretation of another complete performance text, in light of a chosen theatre practitioner – focusing on how this text could be reimagined for a contemporary audience.

### How is this course assessed?

#### Component 1:

- ▶ A portfolio (60 marks)
- ▶ The devised performance/design realisation (20 marks)

#### Component 2:

- ▶ Group performance/design realisation (36 marks)
- ▶ Monologue or duologue/design realisation (24 marks)

#### Component 3:

- ▶ Written examination: 2 hours 30 minutes
- ▶ 40% of the qualification (80 marks)

Written exam is split into 3 sections.

**Section A - Live Theatre:** You will answer one extended response question. Your response will require you to analyse and evaluate a live theatre performance. You will be allowed to bring in notes.

**Section B - Page to Stage - Realising a Performance Text:** You will answer two extended response questions based on an unseen extract from the performance text you have studied. You will demonstrate how you, as a theatre maker, intend to realise the extract in performance. You will answer from the perspective of a performer and a designer.

**Section C - Interpreting a Performance Text:** You will answer one extended response question from a choice of two based on an unseen named section from our chosen performance text. You will demonstrate how your re-imagined production concept will communicate ideas to a contemporary audience. You will also need to outline how the work of our chosen theatre practitioner has influenced your overall production concept and demonstrate an awareness of the performance text in its original performance conditions.

### What next?

In addition to the performing arts specific content, this qualification provides learners with

the opportunity to develop all-round transferable skills such as self-confidence, self-presentation,

personal discipline, time management and organisation skills which are highly regarded by higher education and employers.



# English Language & Literature

## (A Level)

### Why choose this subject?

---

This specially-designed integrated course allows you to deepen your understanding of both language and literature; it will enrich your experience of spoken and written communication.

Designed to ensure the right balance and coverage of the two disciplines, this specification enables you to see how linguistic and literary methods are related and to explore these links in your work.

### What will you study?

#### Year 12

Students will use a range of linguistic and literary devices in studying an anthology of texts produced about Paris. They will also study poetry from Carol Ann Duffy and 'The Lovely Bones' by Alice Sebold.

#### Year 13

Students will use a range of linguistic and literary devices in studying 'A Streetcar Named

Desire' by Tennessee Williams and 'The Kite Runner' by Khaled Hosseini. They will complete coursework comparing literary and non-literary texts of their choice, guided by teachers.

### How is this course assessed?

Assessment for this course typically takes place through written examinations that are set externally and assessments that are conducted internally.

### What next?

---

An A Level in English Language and Literature can lead you to university courses and employment into a wide range of careers including medicine, law, teaching, the media and research. It will help you to develop a wide range of skills such as independent thought, problem solving, an appreciation of nuances in language, research, communication and team work, thereby making it an ideal choice to bridge science and humanity subjects.





# English Literature

## (A Level)



### Why choose this subject?

English Literature gives you an opportunity to discover how literature makes sense of the world through stories, poems, novels and plays. The literature we will study ranges from texts written in the 1600s through to the modern day, allowing students to immerse themselves in the development of language and concepts such as gender and theology. We will explore the contexts of the texts to aid students' understanding of the writers' possible intentions and messages.

We will do a lot of debating and talking about the key texts, so if you enjoy reading and talking about what you read, this could be the course for you.

### Some of the questions we will ask...

- ▶ Why is Shakespeare so important to us over 400 years after he died and how are his themes still relevant today?
- ▶ Is the Duchess in 'The Duchess of Malfi' a tragic heroine?
- ▶ What can Blake's poems teach us about life in Georgian Britain and how are his political and social messages conveyed through his poems?
- ▶ How does 'A Streetcar Named Desire' convey ideas about gender and representation?
- ▶ How can we compare themes in novels like 'A Handmaid's Tale' to modern novels we have explored independently?

### What will you study?

You will study a range of iconic plays, poems, and novels. The focus is on looking at conventions of the genres and the themes and ideas conveyed through them.

### There are four components:

**Poetry:** The study of poems by William Blake, Carol Ann Duffy and Phillip Larkin.

**Drama:** The study of the plays Henry IV, 'The Duchess of Malfi' and 'A Streetcar Named Desire'

**Unseen poetry and prose:** The study of a range of Late Victorian or Interwar Literature alongside a range of exciting poetry.

### The Non-Exam Assessed component:

The study of a set prose text (like The Handmaid's Tale) alongside your own choice of novel. This is a coursework module giving you opportunity to explore your own interests in literature

### How is this course assessed?

Assessment will take the form of three end of Year 13 examinations and one detailed piece of coursework which is assessed by your teacher.

### What next?

An A-Level in English Literature is a highly-regarded subject and can lead to a range of university courses and careers including medicine, law, teaching, publishing, PR, the media, and research.

You will develop a wide range of skills such as improved communication (written and oral), independent thinking, problem solving, analytical skills and teamwork, making it an ideal choice to bridge science and humanity subjects.

### What else?

Expect to take part in lots of group discussion, presentations of your ideas and independent reading and thinking.

You will also be presented with a range of opportunities to take part in outside of curriculum study such as screenings of the plays, theatre trips, study days, lectures/talks and writing workshops.



# **Film Studies** (A Level)

## Why choose this subject?

---

Film Studies develops an in-depth understanding, appreciation and enjoyment of film, both for academic and personal fulfilment. Studying for this A Level you will develop an interest and awareness of how film communicates emotional and intellectual responses to its audience. You will also develop a passion for film which will last a lifetime.

A Level Film Studies thoroughly explores the different film forms and styles, adding another dimension to your own knowledge and experience. Who knows... you might be the next big thing in the world of film!

## What will you study?

On this A Level you will study a range of different films that will give you an insight into the wide variety of genres and equip you with the skills to critically analyse and produce your own content.

## How is this course assessed?

- ▶ **Component 1:** (35%, 2½hr exam) – Study of three US films from the past and present (current films studied are *Some Like it Hot* [1959], *Get Out* [2017], *La La Land* [2017] and *Bonnie and Clyde* [1967]).
- ▶ **Component 2:** Study of 4 global films: two British, one global, and one European non-English language (current films studied are *This is England* [2012], *Shaun of the Dead* [2004], *Pan's Labyrinth* [2006] and *House of Flying Daggers* [2004]). Students also study a documentary film (*Stories We Tell* [2012]), a silent film (*Sunrise* [1927]), and an experimental film (*Memento* [2000]).

- ▶ **Component 3:** Production (NEA/coursework)
  - Produce either an extract from a film highlighting narrative construction OR a screenplay and digitally photographed storyboard of a key section from a film. Evaluate the production work against other professionally produced products.
- ▶ **Film Research and a Creative Project (25%)** – small scale research project on a focus of your own choice and a creative project with reflective analysis
- ▶ **Film experiences, issues and debates (25%)** – written exam covering world cinema, spectatorship and a single film critical study (exact films TBC).

## What next?

---

An A Level in Film Studies can lead to a wide range of careers including pre-production roles in sponsorship, finance, business, screen-writing, or production roles, for example; filming, co-ordination and logistics, producer, or even post-production in careers such as; marketing, promotions and editing.

An A Level Film Studies will also provide you with UCAS points and transferrable skills which are desirable for employment or Higher Education.





# French

## (A Level)



### Why study French at A level?

---

Learning French at A level is not just studying a subject, it is also acquiring a life-long skill. Along with becoming a confident linguist, you will also explore the history and culture of France and Francophone countries. This will involve handling topics on current affairs and engaging in key discussions and debates in French.

Given the academic demand of learning a language, universities look favourably at those who have a qualification in a language, regardless of which course they wish to study.

### What will you study?

#### Year 12

- ▶ The changing nature of family (La famille en voie de changement)
- ▶ The 'cyber-society' (La « cyber-société »)
- ▶ The place of voluntary work (Le rôle du bénévolat)
- ▶ Film analysis

#### Year 13

- ▶ Positive features of a diverse society (Les aspects positifs d'une société diverse)
- ▶ Life for the marginalised (Quelle vie pour les marginalisés?)
- ▶ How criminals are treated (Comment on traite les criminels)
- ▶ Book analysis

### How is this course assessed?

#### Paper 1: Listening, reading and writing | 2 hours 30 mins

Along with the listening element, paper 1 also includes a translation from French into English (minimum of 100 words) and translation from English into French (minimum 100 words).

#### Paper 2: Writing | 2 hours

One question to be answered on the set text and one on the set film. Approximately 300 words per essay.

#### Paper 3: Speaking | Approx 30 minutes

Discussion of a sub-theme from the course and a presentation and discussion of an Individual Research Project, chosen by the candidate

### What next?

---

French is the leading language for fashion, sport (it is the official language of the Olympics and one of the main languages for UEFA) and complements other career options, such as applying language skills to a medical profession, to work for Médecins Sans Frontières.

The UK also trades with over 200 countries worldwide, and businesses of all sizes are endeavouring to expand globally. Therefore, having an A-level in French opens up a wealth of options for your future career.





# Further Maths

## (A Level)

### Why choose this subject?

- ▶ Students taking Further Mathematics overwhelmingly find it to be an enjoyable, rewarding, stimulating, and empowering experience.
- ▶ For someone who enjoys mathematics, it provides a challenge and a chance to explore new and more sophisticated mathematical concepts.
- ▶ Students who take Further Mathematics find that the additional time spent studying mathematics boosts their marks in single A level Mathematics.
- ▶ It makes the transition from sixth form to university courses which are mathematically rich that much easier as more of the first-year course content will be familiar.
- ▶ It enables students to distinguish themselves as able mathematicians in their applications for university and future employment.

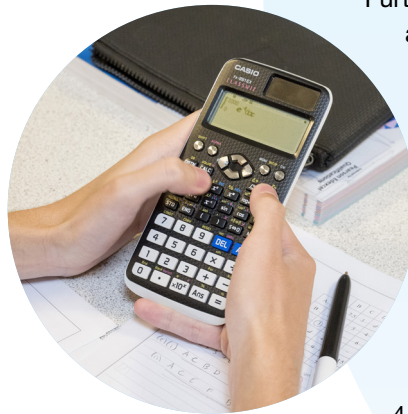
### What will you study?

Further Mathematics must be studied alongside the standard Mathematics A-Level. There is one compulsory Paper and then a range of further topics to select from. Areas which you will cover include:

**Further Pure Mathematics:** An exciting part of maths introduces you to imaginary and complex numbers, parabolic and hyperbolic equations, matrices, and proof by induction. It is extremely rewarding, but it is not for the faint hearted. You will go on to delve further into complex numbers and then straight into one of the most useful areas of mathematics: first and second order differential equations. These are used to model all sorts of processes used in physics, economics, and biology.

A simple example is modelling the rate at which a mug of tea cools down; this is related to the temperature difference between the tea and the room, but this will change as it cools down, making it more complicated to model than you think. Lastly, there is an introduction to a new coordinate system: polar coordinates.

Other areas include extending further with Further Pure Mathematics, then there are options to study a range of applied modules including Further Mechanics, Further Statistics and Discrete mathematics.



### How is this course assessed?

The course is assessed through exams only with 4 exams taken for a full A-Level at the end of the 2 year course. Paper 1 covers all Further Pure mathematics with Papers 2, 3 and 4 giving options of topics including extension of Further Pure Mathematics, Further Statistics and Discrete. Paper 1 is worth 144 marks (50%) and is a 2 hour 40 minute exam with Papers 2, 3 and 4 all worth 60 marks each (16 2/3%) and are 1 hour 15 minute exams.

Students are also regularly assessed throughout the course to ensure that they are keeping on track and making progress.

### What next?

A Level Further Mathematics is highly regarded by universities. If you are planning to take a degree in areas such as engineering, sciences, computing, finance, economics or perhaps mathematics itself, you will benefit enormously from taking further mathematics. Many engineering and mathematics courses at university list A Level Further Mathematics as 'essential' or 'desirable'.





# Geography

## (A Level)



### Why choose this subject?

In Geography we study the world around us. Students will investigate the impact of humans on our environment and will need to have an interest in the future of our planet, investigating the decision making that affects all of our lives.

Geography is a diverse and engaging subject that covers issues relevant to our world today. The best reason for choosing Geography is that you have enjoyed it in GCSE and want to learn more.

### What will you study?

Expect to take part in lots of team work activities, fieldwork, research, as well as individual work. The geography students will go on a number of field trips to investigate geography in the real world. During Year 12 the focus is on coastal systems, hazards, changing places and field work.

In Year 13 you will cover the water and carbon cycle, global governance and resource security. The field work will involve studying the impact of humans on the coastal environment. The second piece of field work will involve an urban study where students will investigate shopping in Bradford.



### How is this course assessed?

The Geography A Level is assessed through two examinations and a 3000-4000 word report on the findings from a fieldwork investigation.

### What next?

An A Level in Geography can lead you to university courses and employment into a wide range of careers including, town planning, medicine, law, teaching, the media, finance and research. Geography is a contemporary and dynamic academic subject that links well with scientific, social and arts subjects. It is well respected by employers and universities and will develop a wide range of skills such as independent thought, problem solving, attention to detail, research, communication and team work.





# Health & Social Care

## (Applied General)

### Why choose this subject?

---

The Health and Social Care sector relates to the whole range of services that are available from health and social care providers. The vast infrastructure, both public and private, encompasses disciplines including sociology, psychology, medicine, law and ethics, as well as residential and other types of care.

The demand for qualified health care professionals has never been greater. The NHS and wider care services are changing at an unprecedented rate and we need to continue to respond to the developments in the health, social care and other related sectors effectively to ensure individuals are properly supported and cared for.

### What will you study?

#### Year 12

- ▶ Human lifespan development - Exploration of physical, intellectual, emotional and social development across the human lifespan, and the factors affecting development and the effects of ageing. This includes the study of various social and psychological theories and how they inform the health and social care sector.
- ▶ Meeting individual care and support needs.

#### Year 13

- ▶ Working in Health and Social Care
- ▶ Physiological disorders and their care.

### How is this course assessed?

#### Year 1:

The course consists of one externally and one internally assessed unit. The subject content includes study of Human Lifespan Development (external exam) and Meeting Individual Care and Support Needs (internal coursework) with students considering a range of scenarios and case studies.

#### Year 2:

A further externally assessed unit along with another internal unit with content including Working in Health and Social Care (external exam) and optional content possibly including psychological and sociological perspectives, physiological disorders and supporting individuals with additional needs. This is, again, approached through consideration of a range of scenarios and case studies.

### What next?

---

Not only could a BTEC in Health and Social Care lead onto a career within the social care sector, it will also develop a range of skills in a vocational context including confidence, communication, team building and motivation. As well as these transferrable skills it will also provide UCAS points towards university entry.





# History

## (A Level)



### Why choose this subject?

---

At Immanuel we teach the AQA GCE History specification. This means that in the courses we offer we think about the 'why?' and the 'how?' of history, not just the 'what?'.

Students have to consider what history is all about and then apply this to look at specific individuals, themes and periods of time. The course allows students to build on the skills and knowledge they've acquired at key stage 3 and GCSE level. It will appeal to independent learners with curious and enquiring minds, people who like to think critically and reflectively. Students will ask questions, make links and draw comparisons, evaluate evidence and organise their ideas to reach substantiated judgements.

### What will you study?

#### Year 12

British History; 'The Tudors, England 1485 – 1603' (The reigns of King Henry VII and King Henry VIII) Non-British History; 'Revolution and Dictatorship: Russia, 1917-53' (The Russian Revolution of 1917 to the emergence of Stalin as Russian leader) Historical Investigation – A personal study centred on the topic of anti-Semitism across Western and Central Europe in the modern world. Year 12 involves the planning and development of the study.

#### Year 13

British History; 'The Tudors, England 1485 – 1603' (Studies of the reigns of each of Henry VIII's children; Edward, Mary and Elizabeth) Non-British History; 'Revolution and Dictatorship: Russia, 1917-53' (An examination of Russia as a dictatorship under Stalin's control.) Historical Investigation – The continuation of the study begun in year 12. Year 13 will involve completing and entering the study with the exam board.

### How is this course assessed?

The course is assessed in two examinations in the summer of Year 13. The historical investigation is marked by teachers in the spring of Year 13 and moderated by the exam board.

### What next?

---

The skills which students develop at A Level History make it a well-respected and valued qualification for a wide variety of University courses and in a range of careers. There are many things you can do with a history qualification besides being a history teacher! For example; print or broadcast journalism, the heritage industry, restoration work, business management, law, civil service, gallery/museum work or architecture.





# IT (Applied General)

## Why choose this subject?

---

Level 3 BTEC in IT places a high value on practical, industry-relevant learning, and aim to support students to acquire the skills needed for immediate employment in the IT field. Additionally, the qualification provides a solid foundation for higher education and career advancement, making it a well-rounded choice for those interested in IT careers.

## What will you study?

Students will focus on practical and hands-on learning, allowing you to develop real-world skills that are directly applicable to the IT industry. This can be especially valuable if you prefer a more practical approach to education.

### Core Units:

**Information Technology Systems:** This unit covers the fundamentals of IT systems, including hardware, software, and networking components.

**Creating Systems to Manage Information:** Students learn about databases, data management, and information systems.

### Optional Units:

- ▶ Web Development
- ▶ Mobile App Development
- ▶ IT Project Management
- ▶ Computer Networks
- ▶ Software Development
- ▶ Digital Graphics and Animation
- ▶ Data Analytics
- ▶ E-commerce
- ▶ IT in Business

## What next?

---

### Further study

This qualification, combined with other qualifications, will provide learners with the skills, knowledge and understanding to progress into Higher Education (HE) on a Computing programme such as Information Systems, Cybersecurity, Database management, Web design, Artificial Intelligence (AI) etc.

### Employment

This qualification enables students to peruse an IT and computing related apprenticeship or follow a careers such as IT Support Specialist, Web Developer, Network Technician, Database Administrator, Software Developer and many more.





# Law (A Level)



## Why choose this subject?

---

Law is the single golden thread that runs throughout society. Regardless of social standing, job title, relationship status, skin colour, qualifications or otherwise, it is the Rule of Law that unites us. We are all bound by the same laws, the common rules that govern all actions from our births to our deaths. Who are our parents, legally? When are we adults? What can we do as young people, compared to what can we do as adults? What is permissible, and what attracts sanctions? How can we enter a contract? Who are we able to marry? What happens upon our death? All of these are questions answered by the law. Law provides a fundamental grounding for every British citizen, an understanding of why the country is run the way it is and how the state affects our day-to-day lives - and how and when it attempts to avoid this.

## What will you study?

Students will study 4 units across two years. The three units which will be on the specification regardless of option choices are:

- ▶ The nature of law and the English legal system
- ▶ Criminal law
- ▶ Tort

In addition, there is an optional unit. At present, we will be studying the law of human rights.

## How is this course assessed?

**Three exam papers at the end of year 13, skills interlaced with knowledge.**

Assessment is via written exam.

## What next?

---

The perfect course for students looking at university to study either law or one of the humanities. Also ideal for students looking at policing, and those who are just interested in how the world works.





# Law

## (Applied General)

### Why choose this subject?

---

Law is more than just the courtroom. It is a living, breathing instrument of our society that is a part of our daily lives, whether we realise it or not.

On this course you will study the fundamentals of our legal system; from how we make a law to how that law can be applied in a practical setting. You will gain insight into both the legislation and cases that govern our society, and the people and human stories that shape the development of the law. You will see the law in action in a wide range of settings; from Parliament to the street corner, from family law, to negligence, to the most serious crimes in our society.

This is a dynamic course that will give you a real insight into the modern English legal system; one of the cornerstones of our society, and yet one that has often been neglected as people believe it is only for the elites.

This is an accessible qualification that gives you the chance to access the law in a way that allows you to learn, and place yourself at the heart of modern Britain.

### What will you study?

#### Year 12

- ▶ Dispute Solving in Civil Law  
Investigating Aspects of the Criminal Law and the Legal System.
- ▶ Aspects of Criminal Law and Police Powers  
Aspects of Family Law.

### How is this course assessed?

This course is assessed through a combination of unit assessments, controlled assessments and coursework.

### What next?

---

BTEC National Applied Law opens up a wide range of routes; from university to higher level apprenticeships. Its content lends itself to those wishing to look into our justice system at university, whether studying law or criminology. It also opens up routes into policing, politics, social work, mediation and a whole range of other careers that require knowledge of our society or analytical skills.



# **Maths** (A Level)

## Why choose this subject?

Find the answers to these and many other questions by choosing mathematics:

- ▶ How can we minimise the amount of material used in packaging?
- ▶ How can we model populations e.g. herds of elephants?
- ▶ How can we predict whether a cricket ball will hit the stumps?

After studying the course, you will be able to answer these questions and many more!

## What will you study?

During this course you will learn to extend your knowledge of algebra and geometry from GCSE and explore the ways in which mathematics can be applied in the real world. Areas which you will cover include:

- ▶ New topics such as coordinate geometry, series, differentiation, and integration, all of which are highly algebraic and are an excellent introduction to maths at a higher level.
- ▶ Branching further into core maths with topics such as logarithms and exponentials, radian measures and higher-level trigonometry.
- ▶ More complex pure maths including trigonometric proofs, further differentiation, and integration as well as numerical methods for finding solutions.
- ▶ Further and more complex work on coordinate geometry as well as vectors in 3D. Lots of the maths studied in earlier core modules is linked together here.

- ▶ **Mechanics and Statistics:** this applied paper introduces students to mathematical modelling of everyday experiences, like driving a car, throwing a ball up in the air, walking across a bridge and playing snooker. To be successful in this area you need to be able to visualise a situation and simplify the forces acting on different parts of it. You will have a better understanding of how the physical world operates and how to use maths to predict what will happen next following this module. Using statistics, you will also get to interpret measures of central tendency and variation, extending to standard deviation, understand and use simple, discrete probability distributions including the binomial distribution as a model, calculating probabilities using the binomial distribution and use the Normal distribution as a model, finding probabilities using the Normal distribution.

## How is this course assessed?

The course is assessed through examination only with 3 exams taken for a full A-Level at the end of the 2 year course. Paper 1 and 2 are equally spread over all Pure mathematics with Paper 3 being the applied Mechanics and Statistics module. Each paper is worth 100 marks and a 2 hour exam. Students are also regularly assessed throughout the course to ensure that students are keeping on track and making progress.

## What next?

Mathematics is recognised by employers as a useful qualification. It is accepted as an entry qualification into virtually all degree courses. Students with a good knowledge of mathematics are perceived as being good at problem solving and processing information.

Maths is essential for studying Maths, Physics or Engineering at University, and for these subjects Further Maths is highly desirable or even essential at the top institutions (see page on Further Mathematics). Other courses which benefit from Maths A-Level are medicine, economics, accounting, and other sciences such as sports science.





# Media Studies

## (A Level)

### Why choose this subject?

---

Studying the media means studying the images, messages, signs and symbols we are bombarded with every day from TV screens, phones, magazines and billboards. You will evaluate and analyse a variety of media products from contemporary video games to post-war advertisements. You will also develop practical skills spanning a range of media forms.

If you like watching and talking about news and current affairs, film, new music artists, adverts or gaming, then Media Studies could be for you. Students with strong opinions about the world around them are welcomed!

### Some of the questions we explore include:

- ▶ How and why stereotypes can be used positively and negatively
- ▶ How audiences are grouped and categorised, including by age, gender, social class and lifestyle
- ▶ How audiences interpret the media, including how they may interpret the same media in different ways.

### What will you study?

#### Year 12

The focus is on understanding key media language and theory, and applying this learning to a range of texts. Students will also create a media product for their coursework such as a magazine, a website, or a TV show opening.

#### Year 13

Year 13 builds on the understanding gained in Year 12, introducing a wider range of texts from different historical periods and global settings. There will be a second piece of coursework in this year.



### How is this course assessed?

The A Level Media Studies is assessed through examinations and the submission of coursework.

### What next?

---

An A Level in Media Studies provides a good foundation for degree-level study of the subject, in addition to related degree options such as Journalism. It is a great choice for those considering careers in advertising and marketing, journalism, and TV/film production.

Expect to spend time working independently on research and coursework. You will need some technical skills with programmes such as Photoshop and Premiere, or at least the willingness to learn.



# Music (A Level)



## Why choose this subject?

A Level Music is a varied course including Musical Appraising, Performing and Composing in a wide variety of styles. It is more Classically orientated so if you favour Rock and Pop, you may wish to consider BTEC Level 3 Music at Immanuel instead.

## What will you study?

This is a new course and may be subject to change.

## How is this course assessed?

### Appraising 40%

You will study 2 pieces from each of the following areas, as well as applying your knowledge to unfamiliar music:

- ▶ Vocal Music; including Bach & Vaughan Williams.
- ▶ Instrumental Music; including Wieck-Schumann & Berlioz.
- ▶ Music for Film; including Hermann's Psycho & Elfman's Batman Returns.
- ▶ Popular Music and Jazz; including Kate Bush, The Beatles & Courtney Pine.
- ▶ Fusions; including Debussy & A. Shankar.
- ▶ New Directions; including Saariaho & Stravinsky.

Assessment is via written exam.

### Performance 30%

A public performance of 8 minutes, performed as a recital. The demand expectation for A Level by the end of Y13 is Grade 7 so you should be able to perform at a strong Grade 5 or Grade 6 ABRSM standard by the start of Y12. Students who are not yet ABRSM Grade 5 or 6 standard may wish to consider the BTEC Level 3 Music at Immanuel.

### Composing 30%

Two compositions, one to a brief set by Pearson and one either free composition or also to a brief.

## What next?

Music A Level students are highly sought after by Universities for their analytical, problem-solving, independent and creative thinking skills.

A Level Music can lead to a Degree course in Music or a joint honours course such as Music & Astrophysics! Past A level students of Immanuel staff have gone on to study at Russell group Universities such as Leeds, Nottingham, and Durham.

Careers include work in the Creative Arts industries, Music teaching, Sound Engineering or Music Therapy; in 2019 the British Music Industry was worth £5.8 billion!





# Music

## (Applied General)

### Why choose this subject?

---

Music in Post-16 at Immanuel College is all about honing your musical and technical skills and becoming a confident performer.

Students will gain experience in a variety of musical genres and styles before deciding on an area of performance specialisation. They will explore the Music Industry, Music Theory and Harmony, Music Software and apps, together with performance, both solo and in ensembles.

Music is not a 9-5 job so not all of your study may be in school time. You may have rehearsals after school or be required to attend evening events.

### What will you study?

#### Practical Music Theory & Harmony

- ▶ 25% of the qualification
- ▶ Learn how to compose, arrange and perform Music in a range of genres and styles.

#### Professional Practice in the Music Industry

- ▶ 25% of the qualification
- ▶ Investigate how the Music industry works and how to effectively manage a career in Music.

#### Ensemble Music Performance

- ▶ 25% of the qualification
- ▶ Performance work exploring a choice of pieces, set by the exam board, working as an ensemble with other musicians.

#### Option Unit

- ▶ 25% of the qualification
- ▶ Most students will undertake Unit 6 Solo Performance preparing a showcase of around 8 minutes or more on their chosen instrument/voice.

### How is this course assessed?

The BTEC Music programme is assessed through a combination of practical tasks supported by written assignments, which demonstrate the development of skills.

### What next?

---

Our Music alumni have great independent learning and team-work skills sought after by many universities. Many of our former students have progressed to a degree course in Music, Sound Engineering or Performing Arts. Possible Apprenticeships could include Music Production, Instrument Technician, or Marketing and Promotions Apprenticeship for a Record Company.





# National Extended Certificate in Uniformed Protective Services

## (Applied General)



### Why choose this subject?

The UK's Uniformed Protective Services industry is one of the largest employers in the country. It works to develop and implement government policies and helps deliver a huge range of services to the public. A BTEC in Uniformed Protective Services is designed to equip students with the knowledge, understanding and skills required for success when moving towards a career in the uniformed services. Those who are attracted to the Uniformed Protective Services sector will find it modern and dynamic, committed to providing employees with a many great opportunities to develop in a positive working environment where they can really make a difference.

### What will you study?

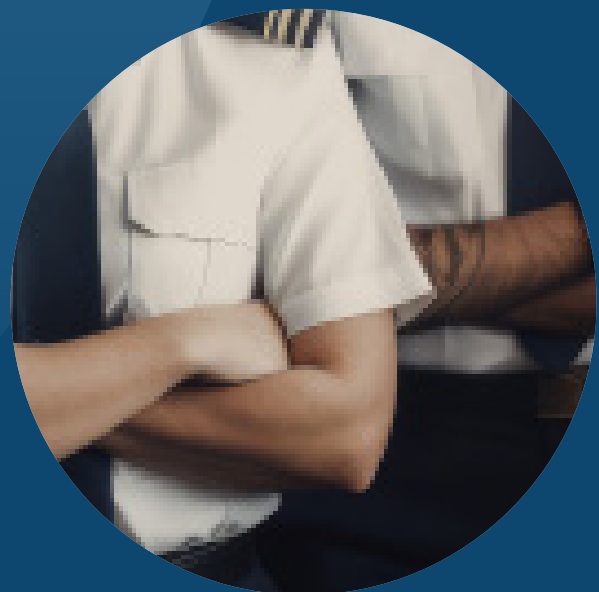
- ▶ **Government, policies and the Uniformed Protective Services:** exploring and analysing how the government and policies impacts the work of the Uniformed Protective Services
- ▶ **Physical preparation, health and lifestyle for the Uniformed Protective Services:** fitness testing and analysis of own performance in relation to Uniformed Protective Services standards
- ▶ **Crime and its effects on society:** analysis of the effects of various crimes on communities
- ▶ **Leadership and Teamwork in the Uniformed Protective Services:** exploration of different management styles and the ways these are utilised within the uniformed protective services
- ▶ **Citizenship, Diversity and the Uniformed Protective Services:** consideration of how citizenship and diversity are promoted both within and by the Uniformed Protective Services
- ▶ **Behaviour and discipline in the Uniformed Protective Services**
- ▶ **Police powers and the law.**

### How is this course assessed?

The course is 50% exam and 50% coursework; students must achieve at least a pass grade in the exam to pass the course overall. Students must be highly motivated and able to complete work to given deadlines and at a high standard as all assignment work throughout the course counts towards the final qualification (along with the exam) which is awarded at either Pass, Merit, Distinction or Distinction\* level. The assessment includes a mixture of both written and practical work.

### What next?

Not only could a BTEC in Uniformed Protective Services lead to a career in the uniformed services it will also develop a range of skills in a vocational context including confidence, competence, team building and motivation. As well as these transferrable skills it will also provide UCAS points towards university entry.



# **Performing Arts** (Applied General)

## Why choose this subject?

---

A BTEC in Performing Arts introduces the study of plays, practitioners and performance skills. Students will devise and perform play texts in front of a visiting audience and will develop an understanding of the background of these texts, to help them to understand the social, cultural and historical context.

If you enjoy devising and performing theatre then this course could be for you! Students with a clear passion, enthusiasm and determination to challenge themselves are welcome!

You will also develop and improve life skills such as resilience, creativity, collaboration, empathy, problem solving and independence.

## What will you study?

### Year 12

- ▶ Investigating Practitioners' Work
- ▶ You will investigate the work of performing arts practitioners and develop critical analysis skills and contextual understanding of how practitioners communicate themes in their work.
- ▶ Developing Skills and Techniques for Live Performance
- ▶ You will explore technical performance skills with a focus on developing skills and techniques in at least two performance styles.



### Year 13

#### Group performance workshop

You will explore and integrate creative, physical and vocal skills and techniques, working collaboratively to create a performance in response to a given stimulus.

Plus, additional modules focusing upon:

- ▶ Improvisation
- ▶ Physical theatre
- ▶ Acting styles
- ▶ Theatre in Education

#### How is this course assessed?

The BTEC Performing Arts programme is assessed through a combination of practical tasks supported by written assignments, which demonstrate the development of skills.

#### What next?

---

In addition to the performing arts sector-specific content, this qualification provides learners with the opportunity to develop all-round transferable skills such as self-confidence, self-presentation, personal discipline, time management and organisation skills which are highly regarded by higher education and employers.





# Philosophy, Theology, Ethics - Religious Studies

## (A Level)



### Why choose this subject?

This subject is highly regarded by employers and all universities and can be used for entry on to any course. It grows in students their higher order thinking skills, develops sophisticated communication skills and an ability to evaluate important issues that go to the heart of the questions about meaning and purpose in our lives.

The course follows on well from GCSE but takes the topics to greater depth. It covers a range of philosophical topics such as “does God exist, and if He does why do we live in a world of evil and suffering?” Ethical units look at what does it mean to live and how do we know what is right and wrong? For example is what is right and wrong today the same as in the past? There is also an in-depth study of Christianity where students learn about the religion’s impact on our history and culture.

### What will you study?

Over the two years you will look at the Philosophy of Religion and Ethics. The A Level programme also looks at various religions including; Buddhism, Christianity, Hinduism, Islam and Judaism.

### Where will religious studies take me?

Oxford University list the following jobs as among those their Religious Studies students go on to do:

Law, medicine, education, health sector, industry, IT, accountancy, finance, media, leisure and recreation, management, consultancy, research, publishing, sales, police, government, teaching, design, charity, politics, marketing, public relations, advertising, telecommunications, banking, surveyor, insurance.

Essentially a good grade in this highly regarded subject can open doors to any opportunity. For example, students applying for medicine have found that work on medical ethics prepared them well for interviews because they are able to demonstrate understanding complex issues around what it is right for a doctor to do in certain situations.

More information on the course can be found at:

<https://www.aqa.org.uk/subjects/religious-studies/as-and-a-level>





# Photography

## (A Level)

### Why choose this subject?

---

On this A Level Photography course you will be introduced to a variety of experiences exploring a range of photographic media, techniques and processes. You will be aware of the four assessment objectives to be demonstrated in the context of the content and skills presented and of the importance of process as well as product.

You will use sketchbooks/workbooks/journals to underpin your work where appropriate.

You will produce an experiments sketchbook during the first six weeks of the course and will then be given six mini projects to complete in your own time. Also during these weeks you will be having guided lessons covering a variety of photographic techniques using digital software.

### What will you study?

#### Year 12

- ▶ Experimental project and observational unit
- ▶ Personal study.

#### Year 13

- ▶ Personal study
- ▶ Externally set assignment.

### How is this course assessed?

The A Level photography course is assessed through a personal investigation that will include a portfolio of practical work and an externally set task.

### What next?

---

An A Level in Photography can lead you to university courses and employment into a wide range of careers including; architecture, photography, teaching, the media and research. It will develop a wide range of skills such as independent thought, problem solving, attention to detail, research, communication, team work etc. making it an ideal choice to bridge science and humanity subjects.

Expect to take part in lots of team work activities and presentations of your ideas and research, as well as individual work. The Photography group will also go on a residential trip, for example, our current students have been to London and Paris.





# Physics

## (A Level)



### Why choose this subject?

---

Physicists explore the fundamental nature of almost everything we know. They probe the furthest reaches of the earth to study the smallest of matter. Join them to enter the world beneath the surface of normal experience.

### What will you study?

#### Year 12

- ▶ Measurements and their errors
- ▶ Particles and radiation
- ▶ Waves
- ▶ Mechanics and energy
- ▶ Electricity.

#### Year 13

- ▶ Further mechanics and thermal physics
- ▶ Fields
- ▶ Nuclear physics.

### How is this course assessed?

There is no coursework on this course, however, your performance during practical sessions will be assessed. There are three exams at the end of the two years for the A Level, all of which are two hours long.

### What next?

---

Studying A Level Physics offers a multitude of amazing career opportunities including;

- ▶ Geophysicist/Field seismologist
- ▶ Healthcare scientist
- ▶ Higher education lecturer
- ▶ Meteorologist
- ▶ Patent attorney
- ▶ Scientific laboratory technician.

You can also move into engineering, astrophysics, chemical physics, nanotechnology, renewable energy and many more. The possibilities are endless!





# Psychology

## (A Level)

### Why choose this subject?

---

Psychology is the study of human behaviour and interaction. It aims to answer the questions:

- ▶ Why do I do that?
- ▶ Why did they make that choice?
- ▶ How can we change our behaviour?

Through studying psychology you'll be able to refine your analytical and organisational skills and learn about scientific research methods, including collecting and working with data.

Learning about human behaviour can also help to develop your communication skills and improve your teamwork and leadership skills.



### Emma Cowley



**Subjects studied:** A-level Maths, Psychology and Finance and completed an AS in Philosophy, Ethics and Theology.

**Current Position:** 3rd Year student studying Sport and Exercise Psychology and playing lots of sport alongside it.

**Why is Immanuel a good place to study:** Immanuel college provided me the opportunity to study what I was interested whilst offering the support I needed to get the grades to further my education. Immanuel's Sixth form created the right atmosphere between working hard on your subjects but also the freedom to balance between life and work which was the perfect mixture and step up from year 11. Without the teachers I had during my A-levels at Immanuel and guidance they supported, I think I would be in a completely different position, so I will always be grateful for them.

### What will you study?

#### Year 12

In Year 12 you will look at social influence, memory, attachment, approaches in psychology, psychopathology and research methods.

#### Year 13

in year 13 you will recap the above topics as well as looking at relationships, aggression and schizophrenia.

### How is this course assessed?

Psychology is an exam only course, with exams taking place at the end of the course.

- ▶ At the end of Year 13 you will sit three exams of 2 hours each.

### What next?

---

Psychologists can work in social care, mental health, education, business, research and sports. Psychology A-level can be useful if you are looking into a degree or further study in Law, Sociology, Critical thinking and Sport.





# Sociology

## (A Level)



### Why choose this subject?

Studying Sociology offers insights into social and cultural issues. Why do men commit more crime than women? Sociology explains possible reasons for why a gender gap exists. Alternatively do women commit more crime than men but are better at concealing their crimes? Is childhood disappearing? Do men and women share housework equally today? Why do British Chinese pupils outperform every pupil in the education system?

In Sociology you will learn a range of new skills that will help you think critically, present reasoned arguments and better understand societal issues.

### What will you study?

#### Year 12

Sociology of Education, Research Methods and Families and Households.

#### Year 13

**Paper 1:** Education with Theory and Methods  
**Examination:** 2 hours

**Paper 2:** Topics in Sociology  
**Examination:** 2 hours

**Paper 3:** Crime and Deviance with Theory and Methods  
**Examination:** 2 hours

### How is this course assessed?

#### At the end of Year 13

In Year 13 the course is assessed through three two-hour examinations.

### What next?

A degree in Sociology can lead you to employment into a wide range of careers including:

- ▶ Nursing
- ▶ Social care
- ▶ Law enforcement
- ▶ Teaching
- ▶ Marketing
- ▶ Advertising
- ▶ Public Relations
- ▶ Journalism.

It prepares you for business, academia, policy-making, and anything requiring analytical skills. The top six Degree/Higher Education courses taken by students who have an A Level in Sociology include:

- ▶ Sociology
- ▶ Psychology
- ▶ English
- ▶ Business Studies
- ▶ Law
- ▶ Teaching.



# Spanish

## (A Level)

### Why study Spanish at A level?

---

Learning Spanish at A level is not just studying a subject, it is also acquiring a life-long skill. Along with becoming a confident linguist, you will also explore the history and culture of Spain and Hispanic countries. This will involve handling topics on current affairs and engaging in key discussions and debates in Spanish.

Given the academic demand of learning a language, universities look favourably at those who have a qualification in a language, regardless of which course they wish to study.

### What will you study?

#### Year 12

- ▶ Modern and traditional values (Los valores tradicionales y modernos)
- ▶ Cyberspace (El ciberespacio)
- ▶ Equal rights (La igualdad de los sexos)
- ▶ Film analysis

#### Year 13

- ▶ Immigration (La inmigración)
- ▶ Racism (El racismo)
- ▶ Integration (La convivencia)
- ▶ Book analysis

### How is this course assessed?

#### Paper 1: Listening, reading and writing 2 hours 30 mins

Along with the listening element, paper 1 also includes a translation from Spanish into English (minimum of 100 words) and translation from English into Spanish (minimum 100 words).

#### Paper 2: Writing 2 hours

One question to be answered on the set text and one on the set film. Approximately 300 words per essay.

#### Paper 3: Speaking Approx 30 minutes

Discussion of a sub-theme from the course and a presentation and discussion of an Individual Research Project, chosen by the candidate.

### What next?

---

Spanish is the world's third most spoken language. As many businesses in the UK are opening their trade to other countries, having the language knowledge, critical-thinking skills and a deep understanding of other cultures make an A-level qualification in Spanish very desirable for employers.





# Sport

## (Applied General)

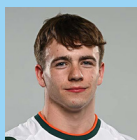


### Why choose this subject?

Over the course of two years, students studying BTEC Sport will gain a greater understanding of how the body enables sport professionals to perform sports at an elite level. Students will understand what happens to the body when we start to exercise and the effects of long-term physical activity and training on the body.

Students will also analyse the impact of lifestyle choices, such as alcohol consumption and smoking on an individual's health, fitness and well-being and provide recommendations on how to improve their lifestyle. BTEC Sport wouldn't be a Sport course without a practical element and students will get the opportunity to showcase their skills, techniques and tactics in two sports of their choice and analyse their performance in both sports.

### Jake Passmore OLY



**Subjects Studied:** Biology, Psychology and Sport.

**Current Position:** An Olympic Diver who represented Ireland in the recent Paris 2024 Olympics. Jake has a full scholarship to the University of Miami.

### Why is Immanuel a good place to study:

The staff at Immanuel were amazing in helping support not only my diving career but my schooling as well; giving me an extra hand in managing my time and commitments so that I could get the most out of my time at Immanuel. The school maintains high standards allowing you to excel inside and outside of school making it the place to be if you're willing to put in the effort. It was also the staff at Immanuel that worked hard to ensure my university applications were a cut above the rest leading me all the way to Miami!

The school gave me many years of meaningful and enjoyable experiences that have led me to where I am today.

### What will you study?

#### Year 12

- ▶ Anatomy & Physiology
- ▶ Practical Sports Performance.

#### Year 13

- ▶ Fitness Training and Programming for Health, Fitness and Wellbeing
- ▶ Professional Development in the Sports Industry.

### How is this course assessed?

This course is assessed through a combination of unit assessment, examinations and coursework.

### What next?

The sports industry is one of the most varied and exciting industries to be a part of and Level 3 BTEC Sport supports students wishing to access higher education degree courses that may lead to a career as a PE teacher, sports coach, sports psychologist, physiotherapist, sports journalist or sports nutritionist.

The qualification will also support students who wish to progress to a career in the fitness or leisure industries or in the uniformed (police, firefighter, ambulance) or armed services (military).



# Technical Business

## (Applied General)

### Why choose this subject?

---

Our Level 3 Cambridge Technical in Business qualifications help your students to achieve their potential and progress to the next stage of their lives, whether that's higher education, an apprenticeship or employment. It will provide learners with the opportunity through applied learning to develop an understanding of the business environment and to focus on a specific aspect of business.

### What will you study?

Students will gain an understanding of the wider external contexts in which businesses operate and of internal business functions and their interdependencies. The exams and units will allow them to appreciate how legal, financial, ethical and resource constraints can affect business behaviour and the influence that different stakeholders can have and how businesses must respond.

The optional units cover a wide range of topics to give learners the opportunity to take a unit that is relevant to a specific aspect of business, for example marketing, accounting, human resources, or business planning. They will also develop transferable skills that are valued by HE and employers such as communication, planning, teamwork, research, and analysis. Students will also complete additional units that will focus on specialist functions and operations of business for example international business, business events, being entrepreneurial etc.

### How will it be assessed?

The course is made up of 5 elements:

Unit 1 and 2 (both exams) completed in year 12, Then year 13 will comprise of 1 exam unit and 2 pieces in internally assessed by the teacher and moderated by the exam board.

Final grading is based up each unit. Students will achieve Pass, Merit and Distinction grades for each unit, achieving points which will be used to calculate the final grade (Pass – Distinction\*)



### What next?

---

#### Further study

This qualification, combined with other qualifications, will provide learners with the skills, knowledge and understanding to progress into Higher Education (HE) on a businessrelated programme such as Business, Business Management, Marketing, Business and Finance, Business and Economics and Accounting. It will also allow them to choose nonbusiness related degree programmes

#### Employment

This qualification enables students to peruse a business-related apprenticeship, accountancy, Marketing coordinator, Business analyst Marketing and Research, Business Administration, Project management etc.



# Travel & Tourism

## (Applied General)



### Why choose this subject?

The UK's Travel and Tourism industry is one of the largest employers in the country. These qualifications have been designed to provide an all-round introduction to the travel and tourism sector for those who wish to further their careers in one of its many connected industries, including retail travel, visitor attractions, accommodation, transport and tour operations.

### What will you study?

Subjects covered over the two years include; The World of Travel and Tourism, Global Destinations, Principles of Marketing in Travel and Tourism and Visitor Attractions.

**Component 1:** Travel and Tourism Organisations and Destinations

**Component 2:** Customer Needs in Travel and Tourism

**Component 3:** External exam at the end of the 2 year course.

### How is this course assessed?

The assessment is one exam each year and internal assessments completed in class.

### What next?

Students who achieve the BTEC Travel and Tourism qualification can look to enter the travel and tourism industry in a number of sectors, including retail travel agencies, tour operating, both in the UK and overseas as well as the events management industry. The BTEC Travel and Tourism qualification also provides you with UCAS points to enter university education.

Alternatively, this qualification will also contribute to developing a range of skills within a vocational context including confidence, competence, team building and motivation.





# Level 2 Certificate in Leadership Through Sport

## Why choose this subject?

---

The Level 2 Certificate in Leadership Through Sport provides an engaging and relevant introduction to the world of sport. It incorporates important aspects of the industry, such as sports leadership, coaching, event management, the psychology of sport and practical sports performance. It enables you to develop and apply your knowledge, while also developing a range of relevant practical, communication and technical skills.

## What will you study?

Students will be given an opportunity to inspire, motivate and improve the performance of a selected target group through the delivery of a sport activity and event. Students will develop their knowledge and skills to be able to plan and lead a range of practical sports activities and could be their first step into leadership and sports coaching.

Students will investigate the technical and tactical requirements of a sport and the methods of improving their own technical and tactical ability in a selected sport.

Students will develop their knowledge of the psychological factors which influence sports performance and how psychological skills can be developed.

They will explore the subject of sport psychology and some of its key principles so learners can use these concepts to help improve sporting performance.

## How will it be assessed?

The course is made up of 3 units:

Unit 1 – Planning and Leading Sports Activities

Unit 2 – Technical skills and tactical awareness for sport

Unit 3 – Psychology for Sports Performance.

## What next?

---

### Further study

This qualification, combined with other qualifications, will provide learners with the skills, knowledge and understanding to progress onto further education or training in a related area, such as a BTEC Level 2 First in Sport, a BTEC Level 3 National in Sport or a BTEC Level 3 National in Sport and Exercise Sciences.

### Employment

This qualification enables students to peruse a career in the sports sector such as a sports coach, sports leader, gym instructor, personal trainer, PE teacher, sports psychologist or physiotherapist.





# Level 2 First Award in Public Services



## Why choose this subject?

The Level 2 First award in Public Services is designed to inspire and enthuse learners to consider a career in the public service sector. It gives learners the opportunity to gain knowledge and develop skills in the public service sector. Once complete this supports progression into a more specialised Level 3 vocational, academic course or into an apprenticeship.

## What will you study?

Students will gain an understanding of how public services operate in the UK.

The wide variety of units allow students to understand how these services are delivered both by individual public services and partnership with others.

## How will it be assessed?

This course is made up of 4 units:

- ▶ The Role and Work of the Public Services
- ▶ Working Skills in the Public Service Sector
- ▶ Public Service and Community Protection
- ▶ Health, Fitness and Lifestyle for the Public Services

## What next?

### Further study

This qualification, combined with other qualifications, will provide learners with the skills, knowledge and understanding to progress onto the BTEC Level 3 National Extended Certificate in Uniformed Protective Services.

### Employment

This qualification enables students to peruse a career in the public services such as police, firefighter, NHS worker, military or progress onto a higher education course in the field of Psychology, Criminology, Social Work, Forensic Science and Law.





# Level 2 Hospitality

## Why choose this subject?

Hospitality is an exciting and diverse industry, it provides food, drink and accommodation for people who are away from home whether travelling, working or on holiday. You will learn a variety of skills such as how to prepare a meal, how to look after customers and how to plan for an event. These skills can be used when working in many settings including hotels, restaurants, bars and catering businesses, which can lead to great job satisfaction and a chance to travel.

## What will you study?

**Unit 1:** (Exam) introduction to the Hospitality Industry- this unit covers the different aspects of the hospitality industry, looking at its component parts and the different products and services that are offered as well as the essential processes involved in operating a hospitality business.

**Unit 2:** Working in the Hospitality Industry- this unit covers the importance of team working and customer service for working in a variety of roles within the hospitality industry and looks at other important aspects such as personal appearance and personal attributes necessary to work successfully.

**Unit 3:** Food safety and health and safety in Hospitality -where you will discover the various aspects of health and safety, and food safety law in relation to those working in the hospitality industry.

**Unit 4:** Planning preparing and finishing food- where you will explore the understanding and skills required for proficiency in planning, preparing, cooking and finishing a range of food types in the hospitality industry.

## How is this assessed?

Your BTEC level 2 first Award in Hospitality is a vocational qualification.

Your teacher will set assignments throughout your course these take the form of projects where you research, plan and make and evaluate a piece of work or an activity case study or presentation. You will also sit an exam in the January of the course.







# Employability (NCFE)



Employability is a course studied at Year 12, providing insight into the world of work, preparing students to succeed in their careers Post-16 and 18 by enhancing their knowledge and experience of working practices and processes. Students receive 4 timetabled lessons per fortnight.

**Exam board:** NCFE

**Qualification:** Either the Award in Employability or the Certificate in Employability. Both are level 2 qualifications (the equivalent of a GCSE qualification).

**Assessment:** Both the Award and the Certificate are assessed internally by teachers and moderated by the exam board. Both courses are entirely portfolio based. There is no examination.

### Award in Employability:

At this level, students need to gain a minimum of 6 credits. 2 of these credits come from the compulsory Understanding Mindset unit. The aim of this unit is to help learners understand why certain mindset qualities are attractive to employers, and to encourage them to think about times when they have displayed these qualities.



The remaining 4 credits are to come from a variety of optional units, including:

Optional unit	Credits awarded
Business and customer awareness	2
Dealing with your first days at work	1
Understanding your customers	1
Understanding motivation	1
Presenting Information	2
Problem solving in the workplace	2
Working with managers	1
Valuing and supporting others	1
Job search skills	1
Job application skills	1
Interview skills	1

### Certificate in Employability:

At this level, students need to gain a minimum of 13 credits. 2 of these credits come from the compulsory Understanding Mindset unit. The aim of this unit is to help learners understand why certain mindset qualities are attractive to employers, and to encourage them to think about times when they have displayed these qualities.

The remaining 11 credits are to come from a variety of optional unit chosen from the same list above.



# Maths & English GCSE Resit

Any student who attends Immanuel College who has not achieved a grade 4 in their GCSE English Language and/or GCSE Maths by the end of Year 11 will have to attend compulsory GCSE resit English Language and Maths lessons, with a view to resitting the exams at the earliest opportunity.

This condition to resit GCSE English and Maths, if they have not been achieved by the end of Year 11, applies to all schools nationally and is not a condition specific to Immanuel College.

## Maths GCSE resit

### Why choose this subject?

Continuing to work towards a grade 4 or above in maths will enable you to build confidence in the following:

- ▶ Develop fluent knowledge, skills and understanding of mathematical methods and concepts.
- ▶ Acquire, select and apply mathematical techniques to solve problems.
- ▶ Reason mathematically, make deductions and inferences, and draw conclusions.
- ▶ Comprehend, interpret and communicate mathematical information in a variety of forms appropriate to the information and context.

### What will you study?

The assessments will cover the following content headings:

- 1 Number
- 2 Algebra
- 3 Ratio, proportion and rates of change
- 4 Geometry and measures
- 5 Probability
- 6 Statistics

### How is this course assessed?

Assessment for this course takes place through three equally weighted written examinations; one non calculator and two calculator papers. Students will have two opportunities to resit within the academic year, one in November and one in May/June.

## English Language Resit:

### What will you study?

Students will explore a range of fiction and non-fiction extracts and practise applying different reading skills such as inference and evaluation. They will also plan and write a range of texts for different audiences, such as narrative writing, letter writing and reviews.

### How is this assessed?

Students will sit two external exams in November.

# Our Christian Vision



## Immanuel College – School Vision

### *All God's Children*

*“Perseverance produces character, and character, hope” (Romans 5:4)*

Our school name and the Immanuel dove embody the fact that God is with us in everything we strive to do, cultivating a community rooted in the biblical values of perseverance, character and hope, where students are inspired to flourish in their educational journey. At Immanuel, we embrace the diversity of all God's children, creating an inclusive and nurturing environment where every member of the school community is respected, valued and celebrated. The Immanuel family encourages, models and practises forgiveness and reconciliation.

Embracing Jesus's mission to serve others, we are dedicated to tackling disadvantage and fostering social justice and sustainability, equipping students with the knowledge, empathy and skills to make a positive impact and advocate for those facing challenges in our local and global communities.

We believe that academic achievement is grounded in perseverance, and we inspire and support our students to overcome challenges, develop a strong work ethic and reach their God-given potential.

Through a broad and balanced academic curriculum, as well as an extensive programme of enrichment opportunities, we develop character in our students, encouraging them to embrace challenges, explore their spirituality, exhibit resilience and demonstrate integrity as they grow to become well-rounded individuals.

We nurture a culture of hope, inspiring our students to develop a sense of optimism and independence, enabling them to confidently pursue their aspirations and embrace life in all its fullness with abundant possibilities.



**Immanuel College**  
Church of England Academy

**bdat**  
Bradford Diocesan  
Academies Trust



# Post-16

Immanuel  
College

## Contact us

### Enquiries

T 01274 425900

E [office@immanuel.bdat-academies.org](mailto:office@immanuel.bdat-academies.org)

### Immanuel College

Leeds Road  
Idle, Bradford  
BD10 9AQ

### Connect with us

f [ImmanuelCollegeBDAT](https://www.facebook.com/ImmanuelCollegeBDAT)

@ [@ImmanuelPost16](https://www.instagram.com/ImmanuelPost16)

X [@ImmanuelBD10](https://www.tumblr.com/ImmanuelBD10)

in [Immanuel College, Bradford](https://www.linkedin.com/company/ImmanuelCollegeBradford)

[www.immanuelcollege.org/post-16](http://www.immanuelcollege.org/post-16)

**bdat**  
Bradford Diocesan  
Academies Trust

