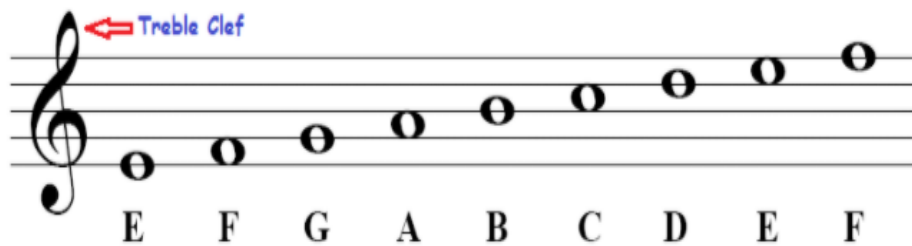


Reading Pitch in Music

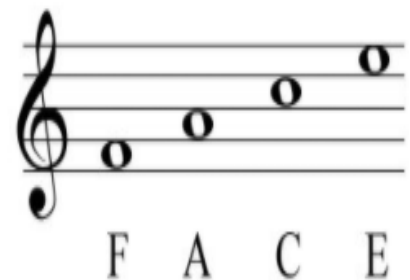
Pitch is how we write music down so that everyone can learn to play it. We use a STAVE to write music.



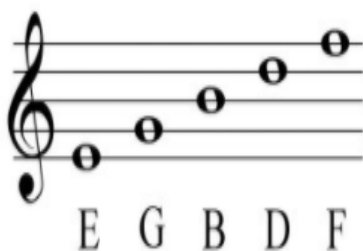
A STAVE has 5 lines, and each line, or space between the lines, has a note that corresponds to it. We have different ways to help us learn those notes.

The notes in the spaces spell out the word FACE, so we use the rhyme *'the notes in the space spell face'* to help us remember those notes. We always start in the bottom space, and work our way up, so the bottom space is an F, and the top space is an E.

Space Notes



Line Notes



The notes on the lines don't spell out a word, so instead we use a phrase to help us remember them. The phrase we are going to use is **'Every Green Bus Drives Fast'**. To work out the notes, we see which line the note is on. If it is line 4, then we would say the phrase up to the fourth word; **'Every Green Bus Drives'**, and then take the first letter of the fourth word, so D.

Pitch Spelling Task

Using what you know about notes on the staff, write the letter of each note underneath it, and use it to spell the different words. The first one is done for you.

All Students

A musical staff in treble clef with four measures. The first measure contains four quarter notes: F (first space), A (second space), C (third space), and E (fourth space). Below these notes are the letters 'F', 'A', 'C', and 'E' respectively. The second measure has one quarter note on the second line (G) with a blank line underneath. The third measure has two quarter notes: one on the second space (A) and one on the third space (C), with blank lines underneath. The fourth measure has four quarter notes: one on the second space (A), one on the third space (C), one on the fourth space (E), and one on the first line (D), with blank lines underneath.

A musical staff in treble clef with four measures. The first measure has three quarter notes: one on the first space (F), one on the second space (A), and one on the third space (C), with blank lines underneath. The second measure has three quarter notes: one on the second space (A), one on the third space (C), and one on the fourth space (E), with blank lines underneath. The third measure has three quarter notes: one on the second space (A), one on the third space (C), and one on the fourth space (E), with blank lines underneath. The fourth measure has three quarter notes: one on the second space (A), one on the third space (C), and one on the fourth space (E), with a 'D' written below the final note.

Most Students

A musical staff in treble clef with four measures. The first measure has three quarter notes: one on the first space (F), one on the second space (A), and one on the third space (C), with blank lines underneath. The second measure has three quarter notes: one on the second space (A), one on the third space (C), and one on the fourth space (E), with blank lines underneath. The third measure has two quarter notes: one on the second space (A) and one on the third space (C), with blank lines underneath. The fourth measure has three quarter notes: one on the second space (A), one on the third space (C), and one on the fourth space (E), with a 'D' written below the final note.